



telergon
gorlan

Quick selection guide

AC | DC

www.telergon.com



gorlan

Who we are



As the **Switch Specialist**, we design and manufacture **low voltage switchgear solutions**. We anticipate our customers' needs and offer electromechanical products for industrial applications, utilities, railway and green energy sector.

Telergon is an **innovative, customer orientated firm** and we are strongly committed to R&D as a tool to boost the future of the industry. Due to this attitude, the company offers a wide range of **standard products** but also the possibility to customize them according to special requirements.

Our knowledge, acquired through an **experience of more than 70 years**, together with the involvement of its **highly qualified professionals**, has allowed Telergon to **be present in more than 100 countries**, always providing the best service and working under the strictest **quality standards**.

Telergon, SAU reserves the right to modify the products herein illustrated without prior notice. Technical data and description in the catalogue are accurate at the printing date, but no liabilities for errors or omissions are accepted. No danger or hazard to health and safety will be caused when products are installed, maintained and used in applications for which it is designed, in accordance with "professional practices" and manufacturer's instructions.

© Telergon, SAU all rights reserved
Upgrades, changes or corrections to this document at www.telergon.com until new edition of the same.



telergon
gorlan

The switch specialist

Ctra. Castellón (Pgno. La Cartuja)
50720 La Cartuja Baja
Zaragoza-Spain
Tel.: (+34) 976 50 08 76

info@telergon.com
www.telergon.com

Index

AC



CAM SWITCHES
T, TB, TF, TP, ENCLOSED SOLUTIONS

2



COMPACT SWITCHES
S3, S3L, S3S, S3M

6



SWITCH-DISCONNECTORS
S5, S6, S6N, S5M

12



CHANGEOVER SWITCHES
CEC, S5F, CCF, S5B

18



MOTORIZED SWITCHES & CHANGEOVER
UM-S, UM-C

22



ENCLOSED SOLUTIONS
CIS, CTR

26



SWITCH FUSES
M3, M21, CIF

28

DC



DC SWITCH-DISCONNECTORS
F1, F7, S5, S5N, S6, S7, S5M

32



CRS FIREFIGHTER SAFETY SWITCH

35



CHANGEOVER AC | DC & DC | DC
S5F, S5L

38



DC ISOLATION ONLY
S5, S6

40



GREEN ENERGY APPLICATIONS

42

For further details about the products included in this guide, please consult the general catalogue, visit our website (www.telergon.com) or contact us directly.

Cam switches

Testing and approvals:



Cam switches are a flexible and low cost solution for any electric diagram. They consist of chambers, each containing up to two double break contacts of positive opening, which are silver alloy coated in order to guarantee a long electromechanical life.

The different configurations available provide faster and safer solutions for several electrical operations, becoming a reliable product that meets the most demanding requirements.

According to:

IEC 60947-3 | UL508 | RoHS | GB/T 14048.3

Customized solutions

From 10 A up to 1200 A



Ergonomic handle

With position indicator



Removable shrouds

In T series

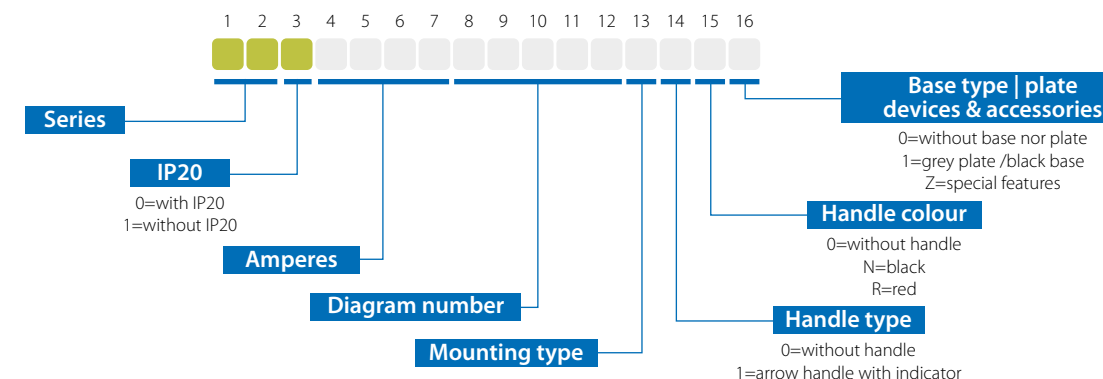


Wide range

Of devices and accessories



T175



T series

From 12A up to 1200A (under request).
1P up to 12 P.
Supplied with IP20 removable terminals

protection (except T175).
Four sizes available: 0,1 2 & 3.



TB series

From 20A up to 32A.
1P up to 12 P.
Side access to all terminal screws (up and down).

Two different bodies depending on mounting type: door or base mounting.



TF series

From 12A up to 32A.
1P up to 12 P.
Square body, smooth sides, axial access to terminal screws.

Two different bodies depending on mounting type: door or base mounting.



TP series

Available for 12A.
1P up to 12 P.
Reduced-sized body.

Door mounting.



Enclosed cam switches

CITP, CITR & CTFR series (plastic enclosure) and CITA & CITC series (metallic enclosure).
Available from 12A up to 100A according to models.
With padlockable handle (under request).

Possibility of other diagrams (under request).
Different enclosure sizes.



Customized solutions

From 10A up to 1200A.
Any electrical programme can be executed.
Up to 36 positions and 72 contacts.
Reversing, selector, ammeter, voltmeter, Dahlander switches...

Special devices for the railway sector.
Customized enclosed solutions are also available.



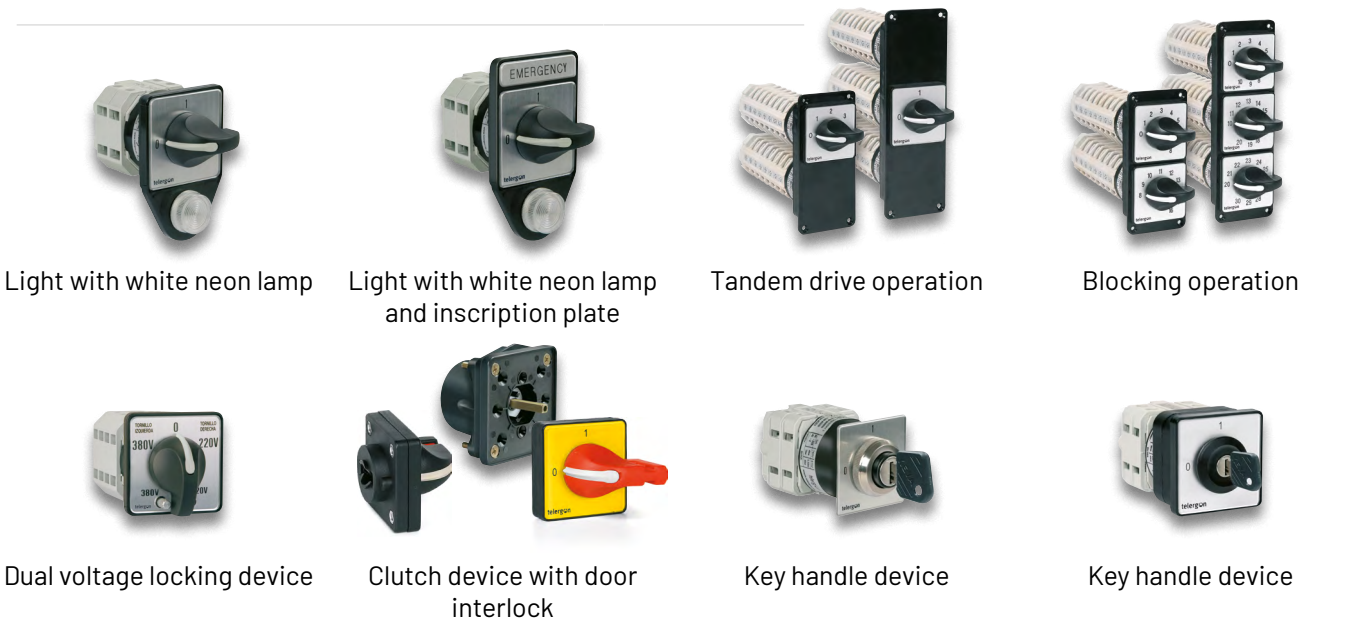
Cam switches | Standard codes



lth		12A	16A	25A	32A
Model		TP-0010	T-00012	T-00020	T-00025
On - off switches					
T-010	1P	TP-001000010E1N1	T-0001200010E1N1	T-0002000010E1N1	T-0002500010E1N1
T-011	2P	TP-001000011E1N1	T-0001200011E1N1	T-0002000011E1N1	T-0002500011E1N1
T-012	3P	TP-001000012E1N1	T-0001200012E1N1	T-0002000012E1N1	T-0002500012E1N1
T-013	4P	TP-001000013E1N1	T-0001200013E1N1	T-0002000013E1N1	T-0002500013E1N1
Reversing switches					
T-101	2P	-	T-0001200101E1N1	T-0002000101E1N1	T-0002500101E1N1
T-102	3P	-	T-0001200102E1N1	T-0002000102E1N1	T-0002500102E1N1
Star delta switches					
T-300	Normal	-	T-0001200300E1N1	T-0002000300E1N1	T-0002500300E1N1
Dahlander multi-step switches					
T-330	0-1-2	-	T-0001200330E1N1	T-0002000330E1N1	T-0002500330E1N1
Changeover switches with center "OFF" 1-0-2					
T-400	1P	TP-001000400E1N1	T-0001200400E1N1	T-0002000400E1N1	T-0002500400E1N1
T-401	2P	TP-001000401E1N1	T-0001200401E1N1	T-0002000401E1N1	T-0002500401E1N1
T-402	3P	TP-001000402E1N1	T-0001200402E1N1	T-0002000402E1N1	T-0002500402E1N1
T-403	4P	TP-001000403E1N1	T-0001200403E1N1	T-0002000403E1N1	T-0002500403E1N1
Multi-step switches with "OFF" position 1-0-2 - 1 pole					
T-410	0+2 positions	-	T-0001200410E1N1	T-0002000410E1N1	T-0002500410E1N1
T-411	0+3 positions	-	T-0001200411E1N1	T-0002000411E1N1	T-0002500411E1N1
T-412	0+4 positions	-	T-0001200412E1N1	T-0002000412E1N1	T-0002500412E1N1
Changeover switches without "OFF" 1-2					
T-500	1P	-	T-0001200500E1N1	T-0002000500E1N1	T-0002500500E1N1
T-501	2P	-	T-0001200501E1N1	T-0002000501E1N1	T-0002500501E1N1
T-502	3P	-	T-0001200502E1N1	T-0002000502E1N1	T-0002500502E1N1
T-503	4P	-	T-0001200503E1N1	T-0002000503E1N1	T-0002500503E1N1
Multi-step switches without "OFF" position 1 pole					
T-510	3 positions	-	T-0001200510E1N1	T-0002000510E1N1	T-0002500510E1N1
T-511	4 positions	-	T-0001200511E1N1	T-0002000511E1N1	T-0002500511E1N1
T-512	5 positions	-	T-0001200512E1N1	T-0002000512E1N1	T-0002500512E1N1
Voltmeter switches					
T-701	3 phases	TP-001000701E1N1	T-0001200701E1N1	-	-
T-705	3 phases and 3 phases to neutral	TP-001000705E1N1	T-0001200705E1N1	-	-
Ammeter switches					
T-720	3 phases	-	T-0001200720E1N1	-	-
T-731	3 circuits	TP-001000731E1N1	T-0001200731E1N1	-	-

For more references, features, poles and positions, please consult.

Bespoke solutions



Light with white neon lamp | Light with white neon lamp and inscription plate | Tandem drive operation | Blocking operation

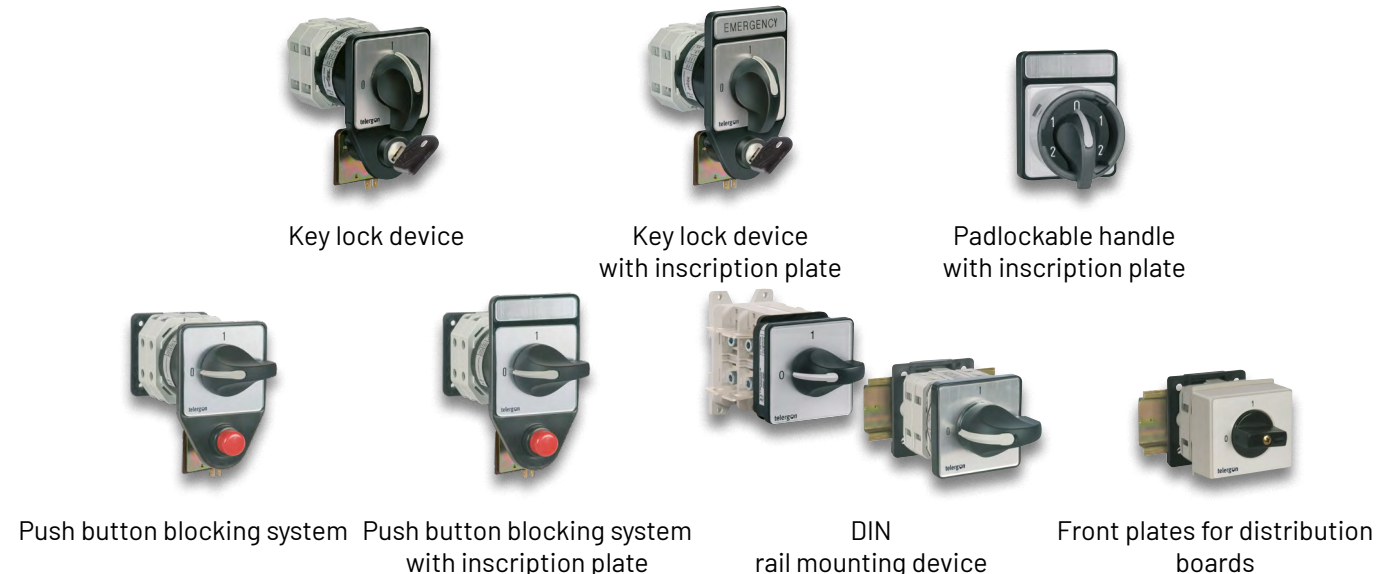
Dual voltage locking device | Clutch device with door interlock | Key handle device | Key handle device

For other customized solutions, please consult.

50A	80A	125A	200A	250A
T-00040	T-00063	T-00100	T-00175	T-00250
T-0004000010E1N1	T-0006300010E1N1	T-0010000010E1N1	T-0017500010E1N1	T-0025000010E1N1
T-0004000011E1N1	T-0006300011E1N1	T-0010000011E1N1	T-0017500011E1N1	T-0025000011E1N1
T-0004000012E1N1	T-0006300012E1N1	T-0010000012E1N1	T-0017500012E1N1	T-0025000012E1N1
T-0004000013E1N1	T-0006300013E1N1	T-0010000013E1N1	T-0017500013E1N1	T-0025000013E1N1
T-0004000101E1N1	T-0006300101E1N1	T-0010000101E1N1	T-0017500101E1N1	T-0025000101E1N1
T-0004000102E1N1	T-0006300102E1N1	T-0010000102E1N1	T-0017500102E1N1	T-0025000102E1N1
T-0004000300E1N1	T-0006300300E1N1	T-0010000300E1N1	T-0017500300E1N1	T-0025000300E1N1
T-0004000330E1N1	T-0006300330E1N1	T-0010000330E1N1	T-0017500330E1N1	T-0025000330E1N1
T-0004000400E1N1	T-0006300400E1N1	T-0010000400E1N1	T-0017500400E1N1	T-0025000400E1N1
T-0004000401E1N1	T-0006300401E1N1	T-0010000401E1N1	T-0017500401E1N1	T-0025000401E1N1
T-0004000402E1N1	T-0006300402E1N1	T-0010000402E1N1	T-0017500402E1N1	T-0025000402E1N1
T-0004000403E1N1	T-0006300403E1N1	T-0010000403E1N1	T-0017500403E1N1	T-0025000403E1N1
T-0004000410E1N1	T-0006300410E1N1	T-0010000410E1N1	T-0017500410E1N1	T-0025000410E1N1
T-0004000411E1N1	T-0006300411E1N1	T-0010000411E1N1	T-0017500411E1N1	T-0025000411E1N1
T-0004000412E1N1	T-0006300412E1N1	T-0010000412E1N1	T-0017500412E1N1	T-0025000412E1N1
T-0004000500E1N1	T-0006300500E1N1	T-0010000500E1N1	T-0017500500E1N1	T-0025000500E1N1
T-0004000501E1N1	T-0006300501E1N1	T-0010000501E1N1	T-0017500501E1N1	T-0025000501E1N1
T-0004000502E1N1	T-0006300502E1N1	T-0010000502E1N1	T-0017500502E1N1	T-0025000502E1N1
T-0004000503E1N1	T-0006300503E1N1	T-0010000503E1N1	T-0017500503E1N1	T-0025000503E1N1
T-0004000510E1N1	T-0006300510E1N1	T-0010000510E1N1	T-0017500510E1N1	T-0025000510E1N1
T-0004000511E1N1	T-0006300511E1N1	T-0010000511E1N1	T-0017500511E1N1	T-0025000511E1N1
T-0004000512E1N1	T-0006300512E1N1	T-0010000512E1N1	T-0017500512E1N1	T-0025000512E1N1
-	-	-	-	-
-	-	-	-	-
-	-	-	-	-
-	-	-	-	-

Standard codes are for rear mounting assemble (E) with standard black arrow handle (1N1). E1N1 at the end. Other fixings (base & DIN mouting with direct or external handle) under request. Other handles under request.

Plate and handle



Key lock device | Key lock device with inscription plate | Padlockable handle with inscription plate

Push button blocking system | Push button blocking system with inscription plate | DIN rail mounting device | Front plates for distribution boards

For other customized solutions, please consult.

At Telergon, we specialize in customized solutions. Above are some examples of customized cam switches we have developed. They are made according to customer specifications or to comply with a diagram or special scheme.

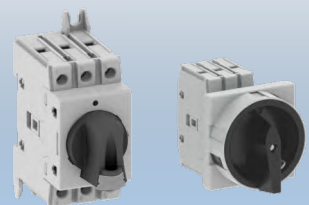
Compact switches

Testing and approvals:  

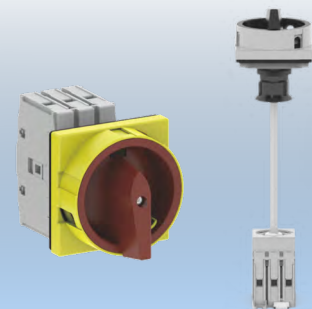
Different compact devices compose the S3 series, all with a high breaking capacity and contact pressure, allowing an optimized response to short circuits.

Designed for use in low voltage civil and industrial machines and facilities, this series includes a range of changeover switches and diverse solutions in plastic and metal enclosures.

Compact-size cases



Different mounting options

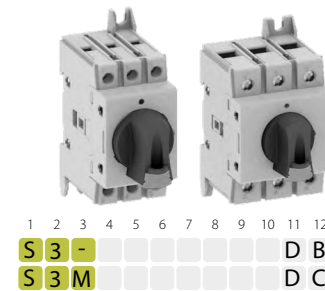
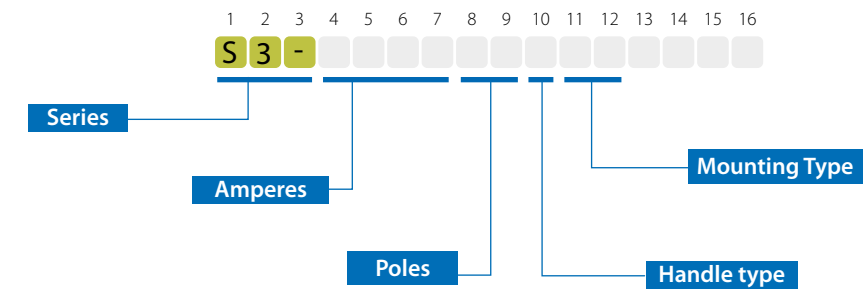
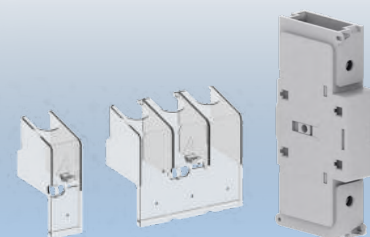


Enclosed solutions

from 16 up to 125A



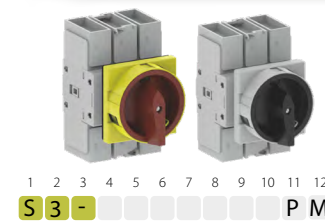
Wide range of add-on accessories



S3 Series

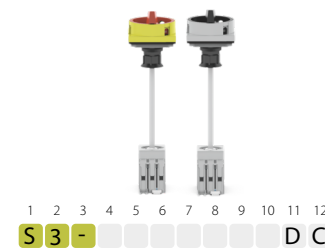
Din Rail mounting

From 3P up to 8P.
Available from
- 16A up to 125A 3P & 3P+N.
- 63A up to 80A 6P & 8P (S3M)



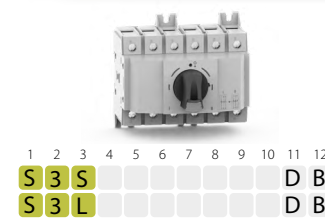
Panel mounting

3P or 3P+N.
Available from 16A up to 125A.
Two types of padlockable handle.



Door Interlock mounting

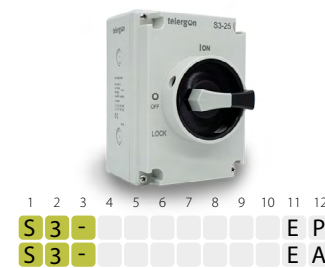
3P or 3P+N.
Available from 16A up to 125A



Changeover switches

3P or 3P+N.
Available 63A & 80A.

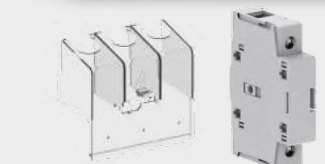
By-pass available (S3S)



Plastic & aluminium enclosed solutions

3P or 3P+N
Available from 16A up to 125A

Padlockable handle.
Emergency and black handles



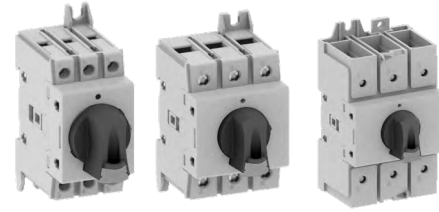
Accessories for these series

Terminal shrouds
Side Mount Add-on Fourth Pole

Add-on Auxiliary Contacts
Shaft extension

Compact switches

► S3 SERIES | DIN-RAIL MOUNTING (DB) **NEW**



				pad lockable	
				3P	3P+N
Size	Amp	Width ∅ (mm)	Code	Code	Code
000	16	35.5	S3-00163P1DB	S3-00163N1DB	S3-00163N1DB
	20	35.5	S3-00203P1DB	S3-00203N1DB	S3-00203N1DB
	25	35.5	S3-00253P1DB	S3-00253N1DB	S3-00253N1DB
	32	35.5	S3-00323P1DB	S3-00323N1DB	S3-00323N1DB
00	40	35.5	S3-00403P1DB	S3-00403N1DB	S3-00403N1DB
	63	52.5	S3-00633P1DB	S3-00633N1DB	S3-00633N1DB
	80	52.5	S3-00803P1DB	S3-00803N1DB	S3-00803N1DB
0	100	69.1	S3-01003P1DB	S3-01003N1DB	S3-01003N1DB
	125	69.1	S3-01253P1DB	S3-01253N1DB	S3-01253N1DB

Compact switches

► S3 SERIES | DOOR INTERLOCK (DC)



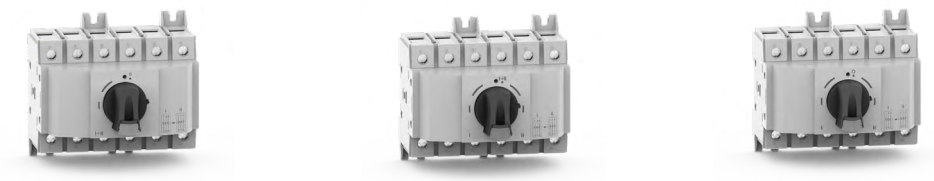
				pad lockable (red/yellow)		pad lockable (black)		without lock (black)	
				3P	3P+N	3P	3P+N	3P	3P+N
Size	Amp	Plate ∅ (mm)	Code	Code	Code	Code	Code	Code	Code
000	16	35.5	S3-00163P4DC	S3-00163N4DC	S3-00163P3DC	S3-00163N3DC	S3-00163P2DC	S3-00163N2DC	S3-00163N2DC
	20	35.5	S3-00203P4DC	S3-00203N4DC	S3-00203P3DC	S3-00203N3DC	S3-00203P2DC	S3-00203N2DC	S3-00203N2DC
	25	35.5	S3-00253P4DC	S3-00253N4DC	S3-00253P3DC	S3-00253N3DC	S3-00253P2DC	S3-00253N2DC	S3-00253N2DC
	32	35.5	S3-00323P4DC	S3-00323N4DC	S3-00323P3DC	S3-00323N3DC	S3-00323P2DC	S3-00323N2DC	S3-00323N2DC
00	40	35.5	S3-00403P4DC	S3-00403N4DC	S3-00403P3DC	S3-00403N3DC	S3-00403P2DC	S3-00403N2DC	S3-00403N2DC
	63	52.5	S3-00633P4DC	S3-00633N4DC	S3-00633P3DC	S3-00633N3DC	S3-00633P2DC	S3-00633N2DC	S3-00633N2DC
	80	52.5	S3-00803P4DC	S3-00803N4DC	S3-00803P3DC	S3-00803N3DC	S3-00803P2DC	S3-00803N2DC	S3-00803N2DC
0	100	69.1	S3-01003P4DC	S3-01003N4DC	S3-01003P3DC	S3-01003N3DC	S3-01003P2DC	S3-01003N2DC	S3-01003N2DC
	125	69.1	S3-01253P4DC	S3-01253N4DC	S3-01253P3DC	S3-01253N3DC	S3-01253P2DC	S3-01253N2DC	S3-01253N2DC

► S3 SERIES | PANEL MOUNTING (PM)



				pad lockable (red/yellow)		pad lockable (black)		without lock (black)	
				3P	3P+N	3P	3P+N	3P	3P+N
Size	Amp	Plate ∅ (mm)	Code	Code	Code	Code	Code	Code	Code
000	16	35.5	S3-00163P4PM	S3-00163N4PM	S3-00163P3PM	S3-00163N3PM	S3-00163P2PM	S3-00163N2PM	S3-00163N2PM
	20	35.5	S3-00203P4PM	S3-00203N4PM	S3-00203P3PM	S3-00203N3PM	S3-00203P2PM	S3-00203N2PM	S3-00203N2PM
	25	35.5	S3-00253P4PM	S3-00253N4PM	S3-00253P3PM	S3-00253N3PM	S3-00253P2PM	S3-00253N2PM	S3-00253N2PM
	32	35.5	S3-00323P4PM	S3-00323N4PM	S3-00323P3PM	S3-00323N3PM	S3-00323P2PM	S3-00323N2PM	S3-00323N2PM
00	40	35.5	S3-00403P4PM	S3-00403N4PM	S3-00403P3PM	S3-00403N3PM	S3-00403P2PM	S3-00403N2PM	S3-00403N2PM
	63	52.5	S3-00633P4PM	S3-00633N4PM	S3-00633P3PM	S3-00633N3PM	S3-00633P2PM	S3-00633N2PM	S3-00633N2PM
	80	52.5	S3-00803P4PM	S3-00803N4PM	S3-00803P3PM	S3-00803N3PM	S3-00803P2PM	S3-00803N2PM	S3-00803N2PM
0	100	69.1	S3-01003P4PM	S3-01003N4PM	S3-01003P3PM	S3-01003N3PM	S3-01003P2PM	S3-01003N2PM	S3-01003N2PM
	125	69.1	S3-01253P4PM	S3-01253N4PM	S3-01253P3PM	S3-01253N3PM	S3-01253P2PM	S3-01253N2PM	S3-01253N2PM

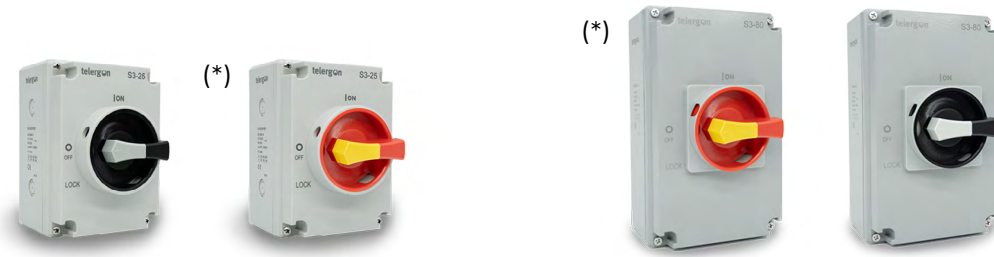
► MULTIPOLE AND CHANGEOVER SWITCHES



				Din-Rail mounting Multipole switch		Din-Rail mounting changeover switch (I-O-II)		Din-Rail mounting By-pass changeover switch (I-I+II-II)	
				6P	8P	3P	3P+N	3P	3P+N
Size	Amp	Plate ∅ (mm)	Code	Code	Code	Code	Code	Code	Code
00	63	105	S3M00636P1DB	S3M00638P1DB	S3L00633P1DB	S3L00633N1DB	S3S00633P1DB	S3S00633N1DB	S3S00633N1DB
	80	105	S3M00806P1DB	S3M00808P1DB	S3L00803P1DB	S3L00803N1DB	S3S00803P1DB	S3S00803N1DB	S3S00803N1DB

Compact switches

► S3 SERIES | ENCLOSED SOLUTIONS

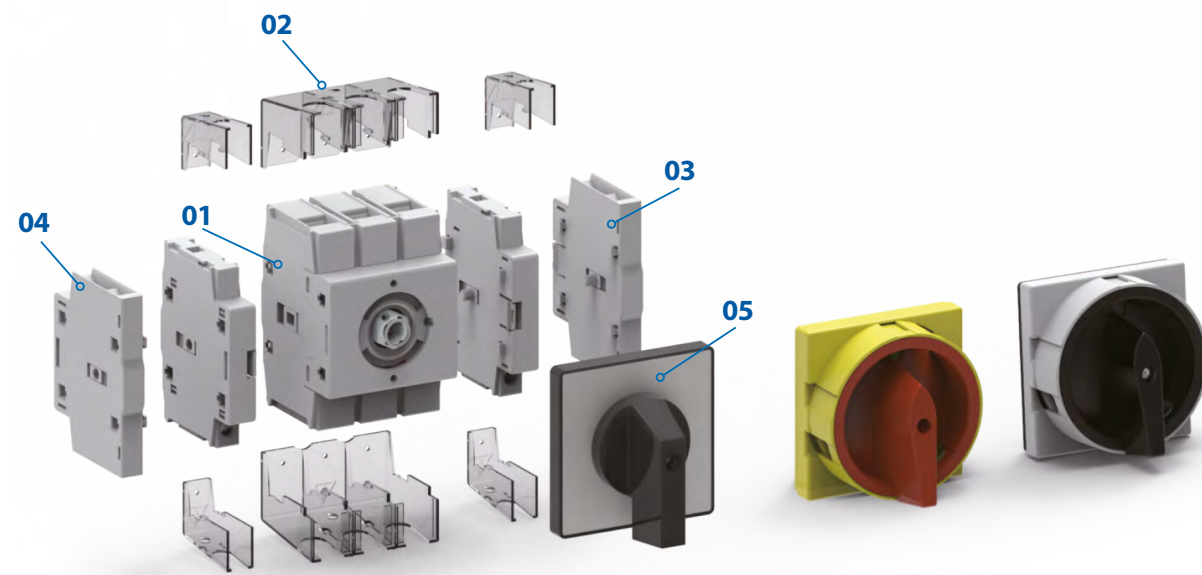


(*)

Size	Amp	Plastic enclosure		Aluminium enclosure	
		3P	3P+N	3P	3P+N
000	16	S3-00163P3EP	S3-00163N3EP	S3-00163P3EA	S3-00163N3EA
	20	S3-00203P3EP	S3-00203N3EP	S3-00203P3EA	S3-00203N3EA
	25	S3-00253P3EP	S3-00253N3EP	S3-00253P3EA	S3-00253N3EA
	32	S3-00323P3EP	S3-00323N3EP	S3-00323P3EA	S3-00323N3EA
00	40	S3-00403P3EP	S3-00403N3EP	S3-00403P3EA	S3-00403N3EA
	63	S3-00633P3EP	S3-00633N3EP	S3-00633P3EA	S3-00633N3EA
0	80	S3-00803P3EP	S3-00803N3EP	S3-00803P3EA	S3-00803N3EA
	100	S3-01003P3EP	S3-01003N3EP	-	-
	125	S3-01253P3EP	S3-01253N3EP	-	-

*For emergency handle, please consult

► S3 SERIES | ACCESORIES



Compact switches

02 Terminal shrouds



Size	Amp.	1P	3P
		Code	Code
000	16A-40A	DS3CUA2	DS3CUA1
00	63A-80A	DS3CUB2	DS3CUB1
0	100A-125A	DS3CU02	DS3CU01

06 Shaft extension



Lenght (mm)	Code
150	DS3EPA1
200	DS3EPA2
320	DS3EPA3

03 Side Mount Add-on Pole



Size	Amp	Width (mm)	Simultaneous		Early-make	
			Front installation	Reverse installation	Front installation	Reverse installation
			DB/DC/EP/EA	PM	DB/DC/EP/EA	PM
000	16A-40A	11	DS3PSAF	DS3PSAR	DS3PDAF	DS3PDAR
00	63A-80A	16	DS3PSBF	DS3PSBR	DS3PDBF	DS3PDBR
0	100A-125A	21.3	DS3PS0F	DS3PS0R	DS3PD0F	DS3PD0R



Size	Amp	Width (mm)	Fixed neutral		Earth /Ground	
			Front installation	Reverse installation	Front installation	Reverse installation
			DB/DC/EP/EA	PM	DB/DC/EP/EA	PM
000	16A-40A	11	DS3PNAF	DS3PNAR	DS3PEAF	DS3PEAR
00	63A-80A	16	DS3PNBF	DS3PNBR	DS3PEBF	DS3PEBR
0	100A-125A	21.3	DS3PN0F	DS3PN0R	DS3PE0F	DS3PE0R

04 Add-on Auxiliary Contacts



Width (mm)	1NO+1NC		2NO+2NC	
	DB/DC/EP/EA	PM	DB/DC/EP/EA	PM
9	Code	Code	Code	Code
	DS3AUP1	DS3AUP1R	DS3AUP2	DS3AUP2R

AC electrical characteristics AC-13: 10A, 230V~ AC-15: 6A, 230V~.

Switch-disconnectors

Testing and approvals:      

All the switch-disconnectors series are based on a sandwich-type body that contains self-cleaning knife contacts, with pre-arc zones to ensure long term and fault-free energy transmission. In addition, the contacts are silver alloy coated with the aim to ensure a long electromechanical life.

The spring operation provides quick and independent switching due to the accumulation of elastic potential energy, which is transmitted at a high speed to enable the arc extinction.

According to:

IEC 60947-3 | IEC 61439-2 | RoHS

Functional and ergonomic handle

Direct or external and in different colours: blue or red/yellow (emergency, only external).



Base mounting

With screws



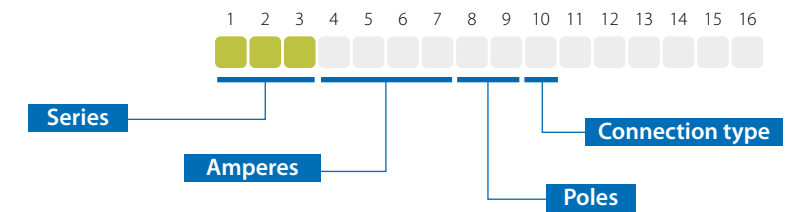
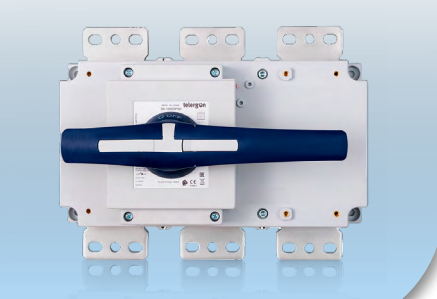
Possibility of incorporating

Different devices and accessories



Wide range of ratings

New switch S6/S6N with great flexibility and versatility of connection

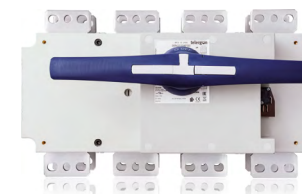


1 2 3 4 5
S 5 -

S5 series

3P & 3P+N.
Available from 40A up to 6300A.
Switching under load up to 800Vac.

Breaking current up to 8 times the operational current.



1 2 3 4 5
S 6 -

S6 & S6N series

3P & 3P+N.
From 1250 A up to 3150 A.
Footprint up to 45% smaller than S5.

Compact design.
Optimized phase to phase distance.



1 2 3 4 5
S 6 -

S6 series

2P, 3P & 3P+N.
Available from 200A up to 800A.

Molded case adjusted to the number of poles.



1 2 3 4 5
S 5 M

S5M series

6P & 8P.
Available from 125A up to 1000A.

Back to back arrangement with operating mechanism in side.



1 2 3 4 5
S 6 N

S6N series

6P & 8P.
Available from 250A.

Back to back arrangement with operating mechanism in front, in order to increase the number of available contacts between 6 and 8.



0-1
1 2 3 4 5
U M - S

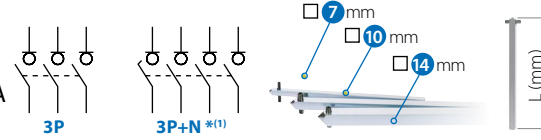
UM-S series

Motorized unit kit 0 - 1.
Wide range of currents depending on series:
- For **S5**: From 250A up to 3150A.
- For **S6** (2P, 3P & 4P): From 200A up to 1800A.
- For **S5M** y **S6N** (6P & 8P): From 125A up to 3150A.

One or two voltages depending on model 120 - 230 Vac (for DC values, please consult).
For further information, please see pages 22-25.

Switch-disconnectors

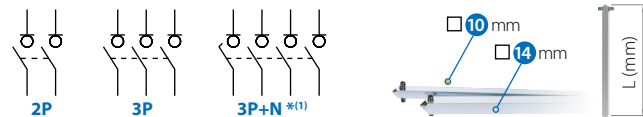
► S5, S6 & S6N | BASE MOUNTING SWITCHES | 3 & 4P | 40A-6300A



Amp.	Size	Connection	3P		3P+N ^{*(1)}		Manual handle			Shaft extensions ^{*(4)}	
			Code	Code	External ^{*(2)}	Direct	Emergency external ^{*(2)}	Type 1 & 2	L	Code ^{*(e1)}	
											Code
40	00		S5-00403PB0	S5-00403NB0	DS-SA01	DS-SI01	DS-SR01	7	250	DS-EP04	
63			S5-00633PB0	S5-00633NB0					387	DS-EP05	
80			S5-00803PB0	S5-00803NB0							
125	0		S5-01253PB0	S5-01253NB0	DS-SA01	DS-SI01	DS-SR01	7	250	DS-EP04	
125			S5-01253PS0	S5-01253NS0					387	DS-EP05	
160			S5-01603PB0	S5-01603NB0							
160			S5-01603PS0	S5-01603NS0							
200			S5-02003PS0	S5-02003NS0							
250			S5-02503PR0	S5-02503NR0							
315	1		S5-03153PR0	S5-03153NR0	DS-SA11	DS-SI11	DS-SR11	10	375	DS-EP14	
400			S5-04003PC0	S5-04003NC0					536	DS-EP15	
500			S5-05003PR0	S5-05003NR0							
630			S5-06303PR0	S5-06303NR0							
800	S5-08003PC0	S5-08003NC0									
1000	3		S5-10003PC0	S5-10003NC0	DS-LA31	DS-LI31	DS-LR31	14	345	DS-EP23	
1250	4		S6-12503PS0	S6-12503NS0	3P DS-LA45	3P DS-LI45	DS-LR41	14	485	DS-EP44	
1600			S6-16003PS0	S6-16003NS0	3P+N DS-LA41	3P+N DS-LI41			635	DS-EP45	
1800			S6-18003PS0	S6-18003NS0							
2000			S6N20003PS0	S6N20003NS0							
2500	5		S6N25003PS0	S6N25003NS0	DS-LI41	DS-LI41	DS-LR41	-	-	-	
3150			S6N31503PS0	S6N31503NS0							
4000	6		S5-40003PP0	S5-40003NP0	DS-EN61 ^{*(3)}	-	-	-	-	-	
5000			S5-50003PP0	S5-50003NP0							
6300			S5-63003PP0	S5-63003NP0							

New S6 and S6N codes.

► S6 | BASE MOUNTING SWITCHES | 2, 3 & 4P | 200A-800A



Amp.	Size	Connection	2P		3P		3P+N ^{*(1)}		Manual handle			Shaft extensions ^{*(4)}	
			Code	Code	Code	External ^{*(2)}	Direct	Emergency external ^{*(2)}	Type 1 & 2	L	Code ^{*(e1)}		
												Code	Code
200	1		S6-02002PS0	S6-02003PS0	S6-02003NS0	DS-SA11	DS-SI11	DS-SR11	10	375	DS-EP14		
250			S6-02502PS0	S6-02503PS0	S6-02503NS0					536	DS-EP15		
315			S6-03152PS0	S6-03153PS0	S6-03153NS0								
400			S6-04002PD0	S6-04003PD0	S6-04003ND0								
500	2		S6-05002PD0	S6-05003PD0	S6-05003ND0	DS-LA21	DS-LI21	DS-LR21	14	345	DS-EP23		
630			S6-06302PS0	S6-06303PS0	S6-06303NS0					535	DS-EP24		
800			S6-08002PD0	S6-08003PD0	S6-08003ND0								

For high performance range (800Vac), please consult the corresponding full details.

For Kit Motorized units - See pages 24-25.

- ^{*(1)} Neutral pole early make & late break - 4P versions with "simultaneous contacts" are also available (please, consult).
- ^{*(2)} Padlockable handle in OFF 0 position. Possibility of unlocking the door in ON I position (with the use of a tool). Door interlocked by a padlock in OFF 0 position.
- ^{*(3)} Slide bar handle, only standard door interlock. Please, consult the corresponding full details.
- ^{*(4)} A standard shaft is included with the external handle.

Please indicate in your order the switch code and the handle code, as these both products are managed separately.



Size	Shaft guide	Auxiliary contacts ^{*(5)}		DIN rail mounting	Safety key lock device ^{*(6)}		Terminal protection ^{*(7)}	Phase barriers			Terminal shrouds ^{*(7)} (3P - 1 unit 4P - 2 units)			Terminal shrouds ^{*(7)} (2 units)
		1NO+1NC	2NO+2NC	Code (2 units)	Simple	Double	Code	1 unit	2 units	3 units	Up	Down	Up or Down	Code
		Code	Code	Code	Code ^{*(e1)}	Code ^{*(e1)}	Code	Code	Code	Code	Code	Code	Code	Code
00	-	D5LAU01	D5LAU02	-	DS-CAB1	DS-CEB1	-	-	-	-	-	-	-	-
0	DS-EC00	D5LAU01	D5LAU02	DS-DN01	DS-CAB1	DS-CEB1	DS-CU01	-	-	-	-	-	-	-
				-							DS-CU02	DS-CU03	DS-CU04	
				-							DS-CU02	DS-CU03	DS-CU04	
				-							DS-CU05	DS-CU06	DS-CU07	
1	DS-EC00	D5LAU01	D5LAU02	-	DS-CA11	DS-CE11	DS-CU12	-	-	-	-	-	-	DS-CU11
2	DS-EC00	D5LAU01	D5LAU02	-	DS-CB21	DS-CF21	DS-CU22	-	-	-	-	-	-	DS-CU21
3	DS-EC00	D5LAU01	D5LAU02	-	DS-CB31	DS-CF31	-	-	-	-	-	-	-	DS-CU31
4	(S6)	DS-EC00	D5LAU01	D5LAU02	-	DS-CB41	DS-CF41	-	DR-SF41	DR-SF42	DR-SF43	3P	DR-CU41	-
4P									DR-CU42					
5	(S6N)	DS-EC00	D5LAU01	D5LAU02	-	DS-CB41	DS-CF41	-	DR-SF44	DR-SF45	-	3P	DR-CU51	-
4P												DR-CU52		
6	(S5)	DS-EC00	DS-AU11	DS-AU12	-	DS-CS41	DS-CD41	-	-	-	-	-	-	-

^{*(P2)} The bridging links must be assembled to the switch in order to comply with the operation and electrical features. Please, consult for more information.

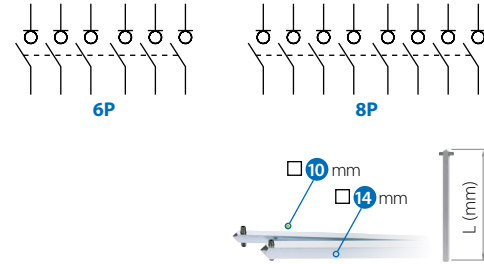


Size	Shaft guide	Auxiliary contacts ^{*(5)}		Safety key lock device ^{*(6)}		Spacers	Phase barriers			Terminal shrouds ^{*(7)}		
		1NO+1NC	2NO+2NC	Simple	Double	(4 units)	(1 unit)	(2 units)	(3 units)			
		Code	Code	Code ^{*(e1)}	Code ^{*(e1)}	Code	Code	Code	Code	Code	Code	Code
1	DS-EC00	D5LAU01	D5LAU02	DS-CA11	DS-CE11	DR-EL11	DR-SF11	DR-SF12	DR-SF13	DR-CU11	DR-CU12	DR-CU13
2	DS-EC00	D5LAU01	D5LAU02	DS-CB21	DS-CF21	DR-EL21	DR-SF21	DR-SF22	DR-SF23	DR-CU21	DR-CU22	DR-CU23

- ^{*(5)} To be used as signaling or control contacts - Ie = 16A (resistive loads) 4A (inductive loads) at 250 Vac. Whilst closing, it closes after the main contacts. Whilst opening, it opens before the main contacts.
- ^{*(6)} Handle interlocked in OFF 0 position by using a key, that only can be removed when the handle is unlocked. Interlocking in other positions available under request.
- ^{*(7)} One set or one unit for input or output. Terminals shrouds for S5N only for frontal switch. These accessories aren't compatible with each other.
- ^{*(e1)} All these codes are related to the new handle . In case of replacements for old design handles, please consult.

Switch-disconnectors

► S5M & S6N | BASE MOUNTING SWITCHES | 6 & 8P | 125A-1800A



S5M



S6N

Amp.	Size	Connection	6 pole (6P)	8 pole (8P)	Manual handle			Shaft extensions ^{*(2)}		
					External ^{*(1)}	Direct	Emergency external ^{*(1)}	□	Type 1 & 2	
									L	Code ^{*(e1)}
Code	Code	Code	Code	Code	Code	Code	Code	Code	Code	
125	0 (S5M)		S5M01256PS0	S5M01258PS0	DS-LA01	DS-SI01	DS-LR01	-	-	-
160			S5M01606PS0	S5M01608PS0						
200			S5M02006PS0	S5M02008PS0						
250	1 (S6N)		S6N02506PS0	S6N02508PS0	DS-SA11	DS-SI11	DS-SR11	10	375	DS-EP14
315			S6N03156PS0	S6N03158PS0						
400			S6N04006PDO	S6N04008PDO						
500			S6N05006PDO	S6N05008PDO					536	DS-EP15
630	2 (S6N)		S6N06306PS0	S6N06308PS0	DS-LA21	DS-LI21	DS-LR21	14	345	DS-EP23
800			S6N08006PDO	S6N08008PDO					535	DS-EP24
1000	3 (S5M)		S5M10006PC0	S5M10008PC0	DS-LA41	DS-LI41	DS-LR41	-	-	-
1250	4 (S6N)		S6N12506PS0	S6N12508PS0	DS-LA41	DS-LI41	DS-LR41	-	-	-
1600			S6N16006PS0	S6N16008PS0						
1800			S6N18006PS0	S6N18008PS0						

For Kit Motorized units - See pages 24-25.

^{*(1)} Padlockable handle in OFF 0 position. Possibility of unlocking the door in ON I position (with the use of a tool). Door interlocked by a padlock in OFF 0 position.
^{*(2)} A standard shaft is included with the external handle.
^{*(3)} To be used as signaling or control contacts – I_e = 16A (resistive loads) 4A (inductive loads) at 250 Vac. Whilst closing, it closes after the main contacts. Whilst opening, it opens before the main contacts.

Please indicate in your order the switch code and the handle code, as these both products are managed separately.



Size	Shaft guide	Auxiliary contacts ^{*(3)}		Safety key lock device ^{*(4)}		Phase barriers ^{*(5)}			Terminal shrouds ^{*(5)} (1 unit)			Terminal shrouds ^{*(5)} (2 units)			
		1NO+1NC	2NO+2NC	Simple	Double	1 unit	2 units	3 units	Up 6P	Down 6P	Up or Down 8P	Only switches			
		Code	Code	Code	Code ^{*(e1)}	Code ^{*(e1)}	Code	Code	Code	Code	Code	Code	Code	Code	
0 (S5M)	DS-EC00	DS-AU11	DS-AU12	DS-CAB1	DS-CEB1	-	-	-	DS-CU02	DS-CU03	DS-CU04	DS-CU02	DS-CU03	DS-CU04	-
									DS-CU05	DS-CU06	DS-CU07				
1 (S6N)	DS-EC00	D5LAU01	D5LAU02	DS-CA11	DS-CE11	-	-	-	-	-	-	-	-	-	-
2 (S6N)	DS-EC00	D5LAU01	D5LAU02	DS-CB21	DS-CF21	-	-	-	-	-	-	-	-	-	-
3 (S5M)	DS-EC00	DS-AU11	DS-AU12	DS-CB21	DS-CF21	-	-	-	-	-	-	-	-	-	DS-CU31
4 (S6N)	DS-EC00	D5LAU01	D5LAU02	DS-CB41	DS-CF41	DR-SF41	DR-SF42	DR-SF43	-	-	-	3P	DR-CU41		
												4P	DR-CU42		

^{*(4)} Handle interlocked in OFF 0 position by using a key, that only can be removed when the handle is unlocked. Interlocking in other positions available under request.
^{*(5)} One set or one unit for input or output. Terminal shrouds for S5M only for frontal switch. These accessories aren't compatible with each other.
^{*(e1)} All these codes are related to the new handle. In case of replacements for old design handles, please consult.

Changeover switches

Testing and approvals:    

All the changeover series offer a high operating load capacity and a high-level disconnection insulation, which ensures reliability and safety in unusual

According to:
IEC 60947-3 | IEC 61439-2 | RoHS

situations. The compact models are with visible cutoff and performed internally the common output without the need for external connections.

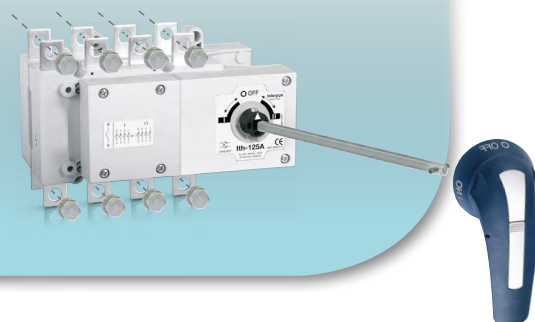
Direct or external

In blue colour



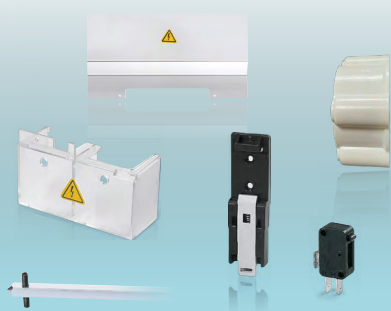
Base mounting

With screws



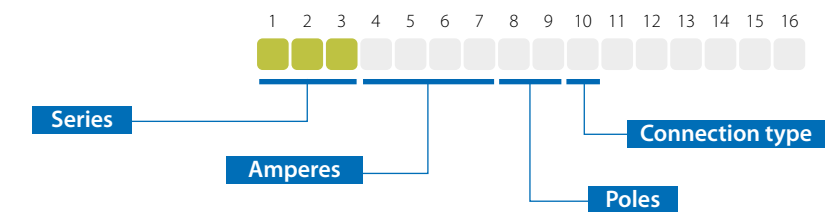
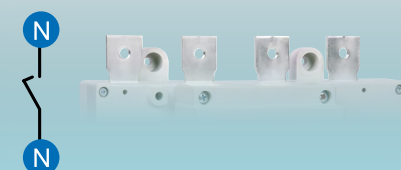
Possibility of incorporate

Different devices and accessories



Preventive security in all these series

Neutral pole early-make & late-break for 3P+N



CEC series

Compact efficient changeover switch.
3P & 3P+N.
Available from 63A up to 125A.
Modular design and reduced sized.
High electrical performance (AC23A).

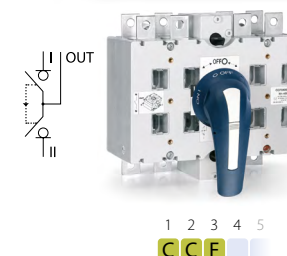
Common output form the up (captive nut allows for a one-handed wire installation process).
Flexible mounting.



S5F series

3P & 3P+N.
Available form 125A up to 200A and from 1600A up to 3150A.

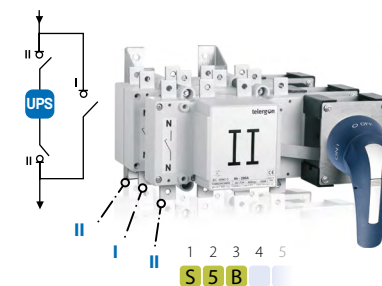
Back to back arrangement.



CCF series

Compact changeover.
3P & 3P+N.
Available from 200A up to 1250A.

Visible cut-off.
Common output from the front.



S5B series

Bypass changeover.
3P & 3P+N.

Available from 125A up to 2000A.
Overlapped contacts I I + II II available under request.



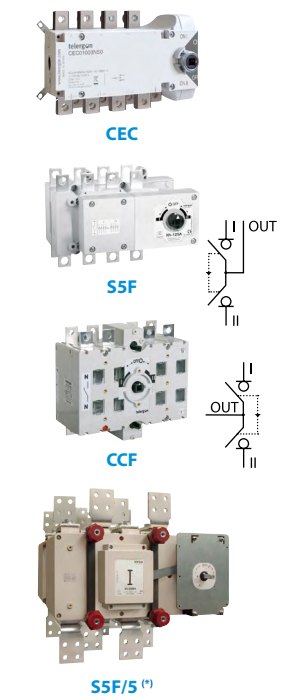
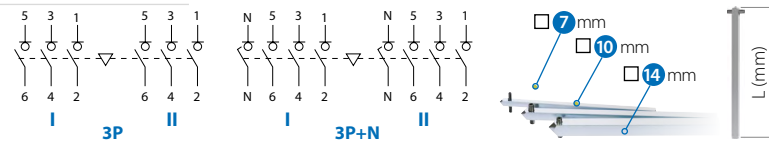
UM-C series

Motorized unit kit 1 - 0 - 2.
- For **S5F** from 125A up to 200A and from 1600A up to 3150A.
- For **CCF** from 200A up to 1250A.
- For **S5B** from 125A up to 2000A.

One or two voltages depending on model 120 - 230 Vac (for DC values, please consult).
For further information, please see pages 24-25.

Changeover switches

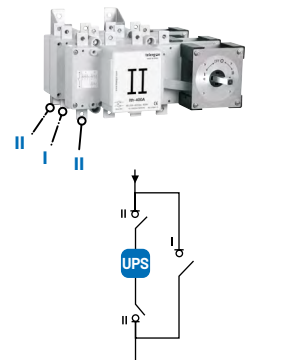
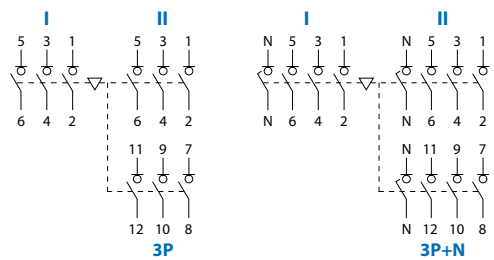
CEC, S5F & CCF SERIES BASE MOUNTING CHANGEOVER SWITCHES 3 & 4P | 63A-3150A



Amp.	Size	Connection	Series	Manual handle		Shaft extensions ⁽⁴⁾				
				External ⁽³⁾		□	Type 1 & 2			
				Code	Code		L	Code ^(e1)		
63	00		CEC	CEC00633PB0	CEC00633NB0	DCELAB1	D5LSI01	7	347	DS-EP02
63			CEC	CEC00633PS0	CEC00633NS0					
80			CEC	CEC00803PB0	CEC00803NB0					
80			CEC	CEC00803PS0	CEC00803NS0					
100			CEC	CEC01003PS0	CEC01003NS0					
125	0		CEC	CEC01253PS0	CEC01253NS0	D5LLA01	D5LSI01	7	250	DS-EP04
125			S5F	S5F01253PS0	S5F01253NS0					
160			S5F	S5F01603PS0	S5F01603NS0					
200			S5F	S5F02003PS0	S5F02003NS0					
200			CCF	CCF02003PS0	CCF02003NS0					
250	1		CCF	CCF02503PS0	CCF02503NS0	DCCLA11	DCCLI11	10	375	DS-EP14
315			CCF	CCF03153PS0	CCF03153NS0					
400			CCF	CCF04003PS0	CCF04003NS0					
500			CCF	CCF05003PS0	CCF05003NS0					
630			CCF	CCF06303PS0	CCF06303NS0					
800	2		CCF	CCF08003PS0	CCF08003NS0	DCCLA21	DCCLI21	14	535	DS-EP24
1000			CCF	CCF10003PS0	CCF10003NS0					
1250			CCF	CCF12503PS0	CCF12503NS0					
1600			S5F	S5F16003PS0	S5F16003NS0					
1800			S5F	S5F18003PS0	S5F18003NS0					
2000	4		S5F	S5F20003PD0	S5F20003ND0	D5LLA31	D5LLI32	-	-	-
2500			S5F	S5F25003PP0	S5F25003NP0					
3150			S5F	S5F31503PP0	S5F31503NP0					

⁽¹⁾ Option of straight terminal (...S0).

S5B SERIES BYPASS CHANGEOVER SWITCHES 3 & 4P | 125A-2000A



Amp.	Size	Connection	Manual handle			
			External ⁽³⁾			
			Code	Code		
125	0		S5B01253PS0	S5B01253NS0	D5LLA01	D5LSI02
160			S5B01603PS0	S5B01603NS0		
200			S5B02003PS0	S5B02003NS0		
250			S5B02503PR0	S5B02503NR0		
315			S5B03153PR0	S5B03153NR0		
400	1		S5B04003PC0	S5B04003NC0	D5LLA11	D5LLI12
500			S5B05003PR0	S5B05003NR0		
630			S5B06303PR0	S5B06303NR0		
800			S5B08003PR0	S5B08003NR0		
1000			S5B10003PC0	S5B10003NC0		
1250	2		S5B12503PS0	S5B12503NS0	D5LLA21	D5LLI22
1600			S5B16003PS0	S5B16003NS0		
1800			S5B18003PS0	S5B18003NS0		
2000			S5B20003PD0	S5B20003ND0		
2000			CCF	CCF10003PS0		

⁽¹⁾ Neutral pole early make & late break - 4P versions with "simultaneous contacts" are also available (please, consult).

⁽²⁾ There are versions of changeover switches without OFF 0 position:

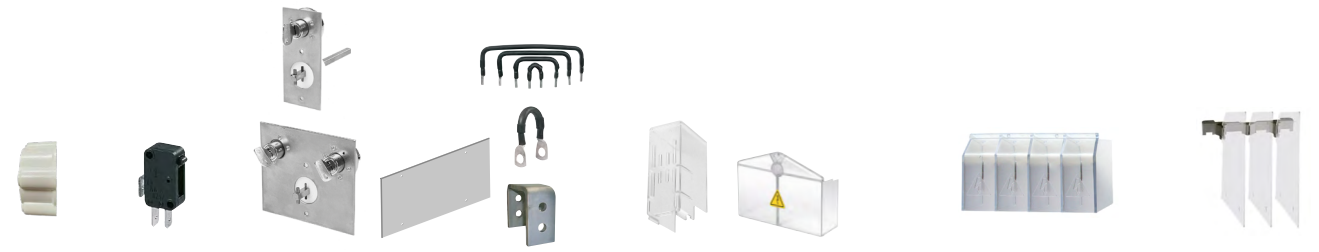
S5F (I - II) = S5D _____ - Please, consult.
CCF "overlapped" (I - II - II) = CCS _____ - Please, consult.

⁽³⁾ Padlockable handle only in OFF 0 position.

⁽⁴⁾ A standard shaft is included with the external handle.

Please indicate in your order the switch code and the handle code, as these both products are managed separately.

For Kit Motorized units - See pages 24-25.



Size	Shaft guide	Auxiliary contacts ⁽⁶⁾		Safety ⁽⁷⁾ key lock device		Rear protective plate	Bridging links	Terminal shrouds ⁽⁸⁾				Terminal shrouds ⁽⁸⁾ (1 unit)			Phase barrier ⁽⁸⁾					
		1NO+1NC 2NO+2NC		Simple	Double			Code	Code (4 units)	3P input	3P common output	4P input position I & II	4P common output	Up 3P	Down 3P	Up or Down 4P	Only changeover switches			
		Code	Code	Code ^(e1)	Code ^(e1)					Code	Code	Code	Code	Code	Code	Code	Code	Code	Code	Code
00	-	DCEAUB1	-	-	-	-	-	-	-	-	-	-	-	-	-	DCECUB1	DCECUB2			
0	DS-EC00	DS-AU11	DS-AU12	D5LCBB1	D5LCFB1	-	D5LPC03	-	-	-	-	-	-	-	-	DS-CU02	DS-CU03	DS-CU04	DS-PB01	DS-PB02
								DS-CU02	DS-CU03	DS-CU04	DS-PB01	DS-PB02	DS-CU05	DS-CU06	DS-CU07	DS-PB04	DS-PB03			
1	DS-EC00	D5LAU01	D5LAU02	D5LCB11	D5LCF11	3P DCCPP11	-	position I DM2CU12	DCCCU11	DM2CU13	DCCCU12	-	-	-	-	-	-			
						4P DCCPP12	-	position II DM2CU11												
2	DS-EC00	D5LAU01	D5LAU02	D5LCB21	D5LCF21	3P DCCPP21	-	position I DM2CU22	DCCCU21	DM2CU23	DCCCU22	-	-	-	-	-	-			
						4P DCCPP22	-	position II DM2CU21												
3	DS-EC00	D5LAU01	D5LAU02	D5LCB31	D5LCF31	3P DCCPP31	-	position I DM2CU32	DCCCU31	DM2CU33	DCCCU32	-	-	-	-	-	-			
						4P DCCPP32	-	position II DM2CU31												
4	DS-EC00	DS-AU11	DS-AU12	D5LCB41	D5LCF41	-	D5LPC42	-	-	DS-CU41	DS-CU41	-	-	-	-	-	-			
5	DS-EC00	DS-AU11	DS-AU12	D5LCB41	D5LCF41	-	-	-	-	-	-	-	-	-	-	-	-			



Size	Auxiliary contacts ⁽⁶⁾		Safety key lock device ⁽⁷⁾		Terminal ⁽⁸⁾ protection	Terminal shrouds ⁽⁸⁾ (2 units)	Terminal shrouds ⁽⁸⁾ (1 unit)			
	1NO+1NC 2NO+2NC		Simple	Double			Code	Up 3P	Down 3P	Up or Down 4P
	Code	Code	Code ^(e1)	Code ^(e1)				Code	Code	Code
0	DS-AU11	DS-AU12	D5LCBB1	D5LCFB1	DS-CU01	-	DS-CU02	DS-CU03	DS-CU04	
							DS-CU05	DS-CU06	DS-CU07	
1	DS-AU11	DS-AU12	D5LCB11	D5LCF11	DS-CU12	DS-CU11	-	-	-	
2	DS-AU11	DS-AU12	D5LCB21	D5LCF21	-	DS-CU21	-	-	-	
3	DS-AU11	DS-AU12	D5LCB31	D5LCF31	-	DS-CU31	-	-	-	
4	DS-AU11	DS-AU12	D5LCB41	D5LCF41	-	DS-CU41	-	-	-	

⁽⁵⁾ There are versions of bypass changeover switch without OFF 0 position "overlapped":

S5B "overlapped" (I - I + II - II) = S5S _____ - Please, consult.

⁽⁶⁾ To be used as signaling or control contacts - Ie = 16A (resistive loads) 4A (inductive loads) at 250 Vac. Whilst closing, it closes after the main contacts. Whilst opening, it opens before the main contacts.

⁽⁷⁾ Handle interlocked in OFF 0 position by using a key, that only can be removed when the handle is unlocked.

⁽⁸⁾ One set or one unit for input or output. Terminal shrouds for S5B and S5F only for frontal switch. These accessories aren't compatible with each other.

^(e1) All these codes are related to the new handle. In case of replacements for old design handles, please consult.

Motorized switch-disconnectors & changeover

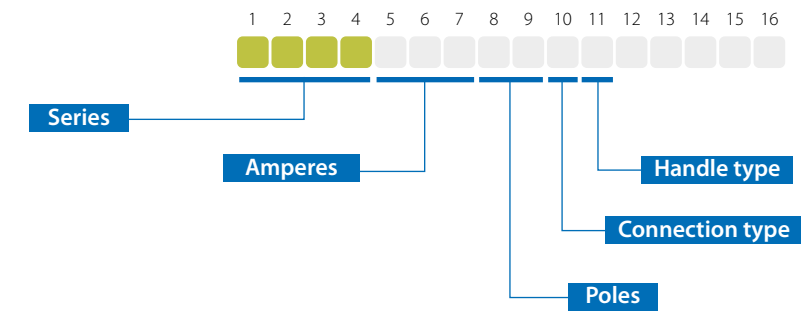
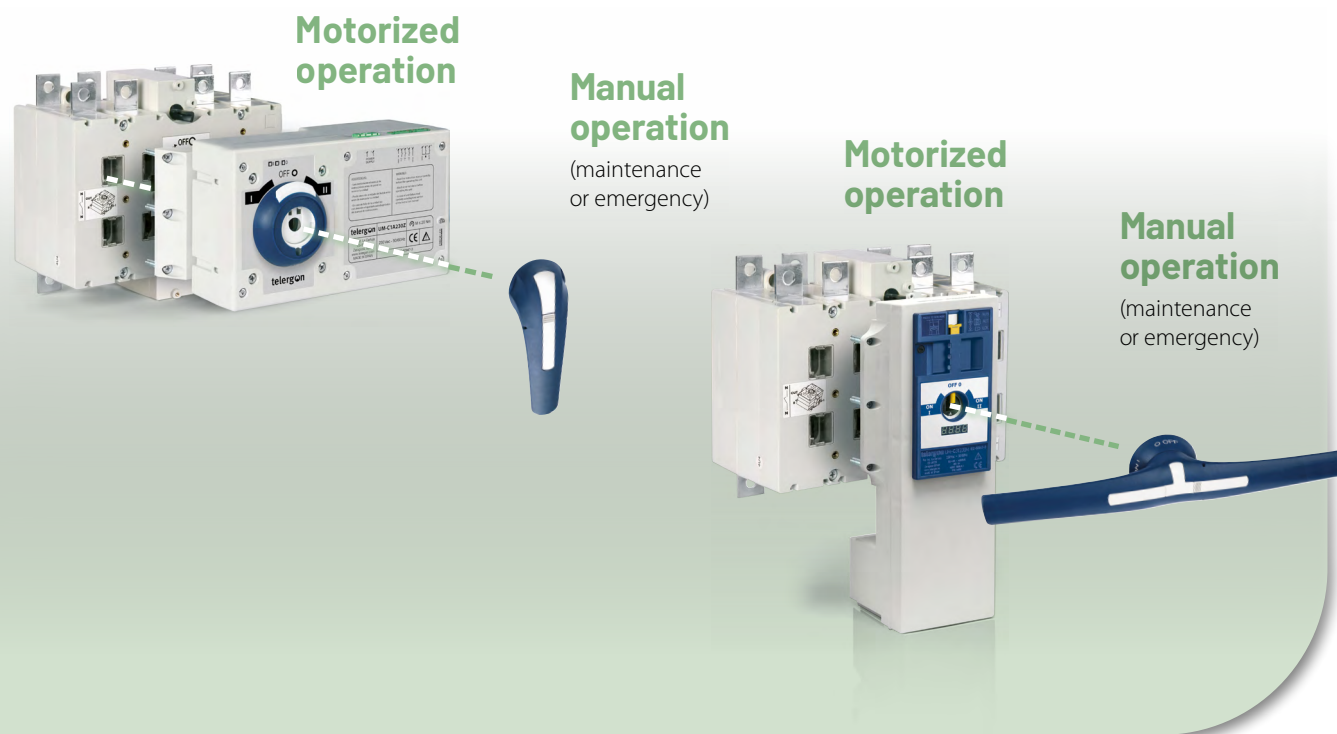
Testing and approvals:  

Motorized units to automate the drive system of the switch-disconnectors, changeover switches and bypass changeover switches. The kit concept simplifies

both logistics and maintenance, since allows an easy and simple assembly. All the series are equipped with a selector for automatic-manual-lock operating modes.

According to:

IEC 60947-1&3 | RoHS | European Standard 2014/35/UE
European standard 2014/30/UE of EMC.



UM-S series

Supply voltage - 230 Vac ^{*(1)}.

For switch-disconnectors:

S5 Sizes 1-2 | 3P & 3P+N ready to motorize (250A... 800A).

S6 Sizes 1-2 | 2P, 3P & 3P+N ready to motorize (200A... 800A).

S6N Size 1 | 6P & 8P ready to motorize (250A... 500A).

^{*(1)} Consult for DC values, please.



Supply voltage 120 - 230 Vac ^{*(1)} with MODBUS.

For switch-disconnectors:

S5 Size 3 | 3P & 3P+N ready to motorize (1000A).

S6 Size 4 | 3P & 3P+N ready to motorize (1250A... 1800A).

S6N Size 2 | 6P & 8P ready to motorize (630A... 800A).

S5M Size 3 | 6P & 8P ready to motorize (1000A).

^{*(1)} Consult for DC values, please.

1 2 3 4 5
UM-S



UM-C series

Supply voltage 230 Vac ^{*(1)}.

For changeover switches:

S5F Size 0 | 3P & 3P+N standard (125A... 200A).

CCF Size 1 | 3P & 3P+N standard (200A...400A)

CCF Size 2 | 3P & 3P+N standard (500A... 800A).

S5B Size 0 | 3P & 3P+N standard (125A... 200A).

S5B Size 1 | 3P & 3P+N ready to motorize (250A... 400A).

^{*(1)} Consult for DC values, please.



Supply voltage 120 - 230 Vac ^{*(1)} with MODBUS

For changeover switches:

CCF Size 2 | 3P & 3P+N standard (500A... 800A).

CCF Size 3 | 3P & 3P+N standard (1000A...1250A)

S5F Sizes 4-5 | 3P & 3P+N standard (1600A... 3150A)

S5B Sizes 2-3 | 3P & 3P+N ready to motorize (500A... 1000A)


S5B Size 4 | 3P & 3P+N standard (1250A... 2000A).

^{*(1)} Consult for DC values, please.

1 2 3 4 5
UM-C

Kit motorized unit for switch-disconnectors & changeover switches

S5 SERIES | SWITCHES | 3 & 4P | 250A-1000A




Amp.	Size	Connection	3P		3P+N ^{*(1)}		UM-S Motorized unit kit (O - I) ^{*(2)}	
			Code	Code	Code	Code	120Vac ^{*(3)}	230Vac ^{*(3)}
250	1	☐	S5-02503PRC	S5-02503NRC	-	-	-	UM-S1A230Z
315			S5-03153PRC	S5-03153NRC				
400			S5-04003PCC	S5-04003NCC				
500	2	☐	S5-05003PRC	S5-05003NRC	-	-	-	UM-S2A230Z
630			S5-06303PRC	S5-06303NRC				
800			S5-08003PCC	S5-08003NCC				
1000	3	☐	S5-10003PCC	S5-10003NCC	MB UM-S31120M	MB UM-S31230M		

For Kit Motorized Units for Size 4 & 5, please consult.

- ☐ UM + S5 sizes 1 - 2 normal mounting
- ☐ UM + S5 size 3 normal mounting


S6 SERIES | SWITCHES | 2, 3 & 4P | 200A-1800A



Amp.	Size	Connection	2P	3P	3P+N ^{*(1)}	UM-S Motorized unit kit (O - I) ^{*(2)}	
			Code	Code	Code	230Vac ^{*(3)}	Code
200	1	☐	S6-02002PSC	S6-02003PSC	S6-02003NSC	-	UM-S1A230Z
250			S6-02502PSC	S6-02503PSC	S6-02503NSC		
315			S6-03152PSC	S6-03153PSC	S6-03153NSC		
400	2	☐	S6-04002PDC	S6-04003PDC	S6-04003NDC	-	UM-S2A230Z
500			S6-05002PSC	S6-05003PSC	S6-05003NSC		
630			S6-06302PSC	S6-06303PSC	S6-06303NSC		
800	4	☐	S6-08002PDC	S6-08003PDC	S6-08003NDC	-	UM-S47230M
1250			-	S6-12503NSC	S6-12504PSC		
1600			-	S6-16003NSC	S6-16004PSC		
1800			-	S6-18003NSC	S6-18004PSC		

- ☐ UM + S6 sizes 1 - 2 normal mounting
- ☐ UM + S6 size 4 normal mounting

S5M & S6N SERIES | SWITCHES | 6 & 8P | 125A-2000A



Amp.	Size	Connection	6P		8P		UM-S Motorized unit kit (O - I) ^{*(2)}	
			Code	Code	Code	Code	120Vac ^{*(3)}	230Vac ^{*(3)}
250	1 (S6N)	☐	S6N02506PSC	S6N02508PSC	-	-	-	UM-S2A230Z
315			S6N03156PSC	S6N03158PSC				
400			S6N04006PDC	S6N04008PDC				
500	2 (S6N)	☐	S6N05006PDC	S6N05008PDC	-	-	-	UM-S26230M
630			S6N06306PSC	S6N06308PSC				
800			S6N08006PDC	S6N08008PDC				
1000	3 (S5M)	☐	S5M10006PCC	S5M10008PCC	MB UM-S35120M	MB UM-S35230M		

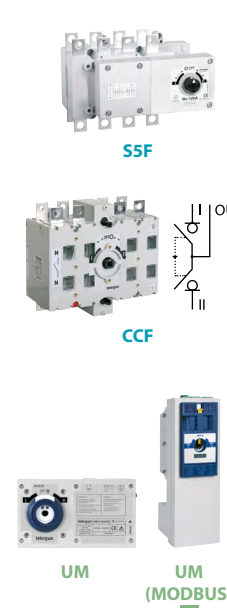
For Kit Motorized Units for S6 Size 4, please consult.

- ☐ UM + S6N normal mounting
- ☐ UM + S5M size 3 normal mounting
- ☐ UM + S5M size 3 inverted mounting (please consult UM codes)

- ^{*(1)} Neutral pole early make & late break - 4P versions with "simultaneous contacts" are also available (please, consult).
- ^{*(2)} UM Kit code is just available for the standard corresponding switch or changeover-switch. Please, consult for a different type of mounting or different code of switch or UM kit.
- ^{*(3)} For DC values, please consult.

⚠ For all solutions, please indicate in your order the switch code and the UM Kit code, as these both products are managed separately.

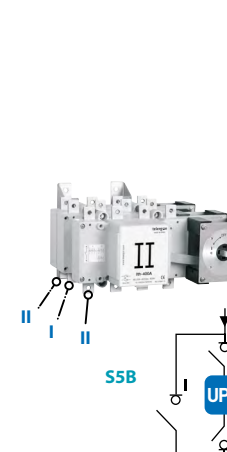
S5F & CCF SERIES | MOTORIZED CHANGEOVER SWITCHES | 3 & 4P | 125A-3150A



Amp.	Size	Connection	Series	3P		3P+N ^{*(4)}		UM-C Motorized unit kit (I - O - II) ^{*(6)}	
				Code	Code	Code	Code	120Vac ^{*(8)}	230Vac ^{*(8)}
125	0	☐	S5F	S5F01253PS0	S5F01253NS0	-	-	-	UM-C0A230Z
160			S5F	S5F01603PS0	S5F01603NS0				
200			S5F	S5F02003PS0	S5F02003NS0				
200	1	☐	CCF	CCF02003PS0	CCF02003NS0	-	-	-	UM-C1A230Z
250			CCF	CCF02503PS0	CCF02503NS0				
315			CCF	CCF03153PS0	CCF03153NS0				
400	2	☐	CCF	CCF04003PS0	CCF04003NS0	-	-	-	UM-C2A230Z
500			CCF	CCF05003PS0	CCF05003NS0				
630			CCF	CCF06303PS0	CCF06303NS0				
800	3	☐	CCF	CCF08003PS0	CCF08003NS0	MB UM-C21120M	MB UM-C21230M		
1000			CCF	CCF10003PS0	CCF10003NS0	MB UM-C31120M	MB UM-C31230M		
1250			CCF	CCF12503PS0	CCF12503NS0				
1600	4	☐	S5F	S5F16003PS0	S5F16003NS0	-	-	-	UM-C45120M
1800			S5F	S5F18003PS0	S5F18003NS0				
2000			S5F	S5F20003PDC	S5F20003NDC				
2500	5	☐	S5F	S5F25003PP0	S5F25003NP0	-	-	-	UM-C45230M
3150			S5F	S5F31503PP0	S5F31503NP0				

- ☐ UM + S5F size 0 normal mounting
- ☐ UM + CCF sizes 1 - 2 normal mounting
- ☐ UM + CCF size 3 normal mounting
- ☐ UM + S5F sizes 4 - 5 normal mounting
- ☐ UM + CCF size 3 inverted mounting (please consult UM codes)
- ☐ UM + S5F sizes 4 - 5 inverted mounting (please consult UM codes)

S5B SERIES | MOTORIZED BYPASS CHANGEOVER SWITCHES | 3 & 4P | 125A-2000A



Amp.	Size	Connection	3P		3P+N ^{*(4)}		UM-C Motorized unit kit (I - O - II) ^{*(6)}	
			Code	Code	Code	Code	120Vac ^{*(8)}	230Vac ^{*(8)}
125	0	☐	S5B01253PS0	S5B01253NS0	-	-	-	UM-C0A230Z
160			S5B01603PS0	S5B01603NS0				
200			S5B02003PS0	S5B02003NS0				
250	1	☐	S5B02503PRC	S5B02503NRC	-	-	-	UM-C14230Z
315			S5B03153PRC	S5B03153NRC				
400			S5B04003PCC	S5B04003NCC				
500	2	☐	S5B05003PRC	S5B05003NRC	-	-	-	UM-C24120M
630			S5B06303PRC	S5B06303NRC				
800			S5B08003PRC	S5B08003NRC				
1000	3	☐	S5B10003PCC	S5B10003NCC	-	-	-	UM-C34120M
1250			S5B12503PS0	S5B12503NS0				
1600			S5B16003PS0	S5B16003NS0				
1800	4	☐	S5B18003PS0	S5B18003NS0	-	-	-	UM-C44230M
2000			S5B20003PDC	S5B20003NDC				

- ☐ UM + S5B sizes 0-1 normal mounting
- ☐ UM + S5B sizes 2-3-4 normal mounting
- ☐ UM + S5B sizes 2-3-4 inverted mounting (please consult UM codes)

^{*(4)} Neutral pole early make & late break - 4P versions with "simultaneous contacts" are also available (please, consult).

^{*(5)} There are versions of changeover switches without 0 - OFF position (please, consult):

S5F (I - II) = S5D _____
 CCF "overlapped" (I - I+II - II) = CCS _____

^{*(6)} UM Kit code is just available for the standard corresponding switch or changeover-switch. Please, consult for a different type of mounting or different code of switch or UM kit.

^{*(4)} There are versions of bypass changeover switch without OFF 0 position "overlapped" (please, consult):

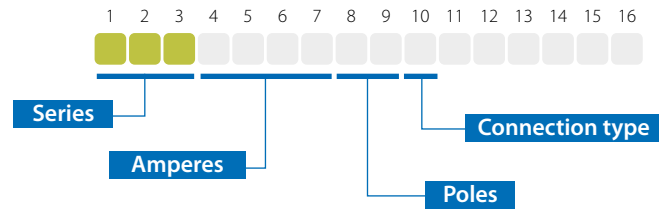
S5B "overlapped" (I - I + II - II) = S5S _____

^{*(8)} For DC values, please consult.

⚠ Please indicate in your order the changeover switch code and the UM Kit code, as these both products are managed separately.

Enclosed solutions

Switch-disconnectors and changeover switches in metal enclosures with external padlockable handle in OFF 0 position and the highest protection standards.



1 2 3 4 5
CIS

CIS25C series

Metal enclosed switch.

3P or 3P+N.

Available from 40A up to 3150A.

Protection rating IP55 - IP65.

Possibility of unlocking the door in ON I position (with the use of a tool).

Opening of the door also can be blocked by padlock in OFF 0 position.



1 2 3 4 5
CTR

CTR2 series

Metal enclosed changeover switch.

3P or 3P+N.

Available from 63A up to 3150A.

Protection rating IP55 - IP65.



1 2 3 4 5
CTR

CTRCCC & CTRCFC series

Metal enclosed changeover switch 3P+N with gen-set control module integrated and motorized unit.

Operated by motorized unit.

Control module mounted on the door:

For the generators control with automatic switching Mains – Gen set.

Configurable through programming software.

Available from 125A up to 2000A.

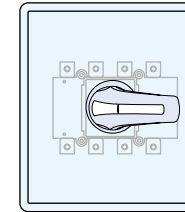
Back to back model.

Protection rating IP54.

Power section protected against accidental contacts.

Manual handle included (for emergency operation or maintenance).

CIS25C SERIES | ENCLOSED SWITCH-DISCONNECTORS

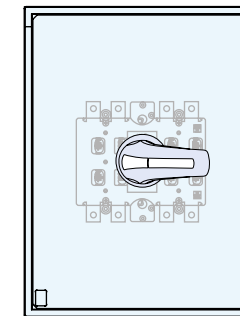


Size	Amp.	3P	3P+N ^{*(2)}
		Code	Code
00	40	CIS25C00403PB	CIS25C00403NB
	63	CIS25C00633PB	CIS25C00633NB
	80	CIS25C00803PB	CIS25C00803NB
0	125	CIS25C01253PB	CIS25C01253NB
	160	CIS25C01603PB	CIS25C01603NB
	200	CIS25C02003PS	CIS25C02003NS
1	250	CIS25C02503PR	CIS25C02503NR
	315	CIS25C03153PR	CIS25C03153NR
	400	CIS25C04003PC	CIS25C04003NC
2	630	CIS25C06303PR	CIS25C06303NR
	800	CIS25C08003PR	CIS25C08003NR
3	1000	CIS25C10003PS	CIS25C10003NS
	1250	CIS26C12503PS	CIS26C12503NS
	1600	CIS26C16003PS	CIS26C16003NS
4	1800	CIS26C18003PS	CIS26C18003NS
	2000	CIS26C20003PS ^{*(3)}	CIS26C20003NS ^{*(3)}
	2500	CIS26C25003PS ^{*(3)}	CIS26C25003NS ^{*(3)}
5	3150	CIS26C31503PS ^{*(3)}	CIS26C31503NS ^{*(3)}

^{*(2)} Neutral pole early make-late break.

^{*(3)} IP55.

CTR2 SERIES | ENCLOSED CHANGEOVER SWITCHES

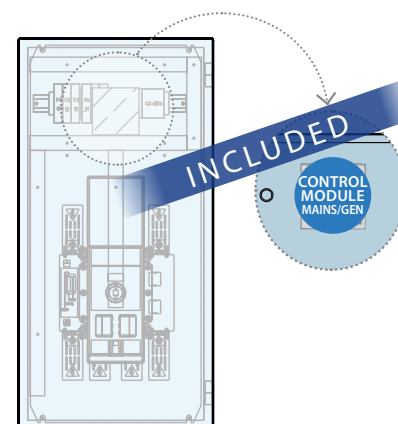


Size	Amp.	3P	3P+N ^{*(2)}
		Code	Code
00	63	CTR2EC00633PS	CTR2EC00633NS
	80	CTR2EC00803PS	CTR2EC00803NS
	100	CTR2EC01003PS	CTR2EC01003NS
0	125	CTR2EC01253PS	CTR2EC01253NS
	160	CTR2FC01603PS	CTR2FC01603NS
	200	CTR2FC02003PS	CTR2FC02003NS
1	250	CTR2CC02503PS	CTR2CC02503NS
	315	CTR2CC03153PS	CTR2CC03153NS
	400	CTR2CC04003PS	CTR2CC04003NS
2	500	CTR2CC05003PS	CTR2CC05003NS
	630	CTR2CC06303PS	CTR2CC06303NS
	800	CTR2CC08003PS	CTR2CC08003NS
3	1000	CTR2CC10003PS	CTR2CC10003NS
	1250	CTR2CC12503PS	CTR2CC12503NS
	1600	CTR2FC16003PS	CTR2FC16003NS
4	1800	CTR2FC18003PS	CTR2FC18003NS
	2000	CTR2FC20003PD	CTR2FC20003ND
	2500	CTR2FC25003PP ^{*(2)}	CTR2FC25003NP ^{*(2)}
5	3150	CTR2FC31503PP ^{*(2)}	CTR2FC31503NP ^{*(2)}

^{*(1)} Neutral pole early make-late break.

^{*(2)} IP55.

CTR SERIES | ENCLOSED CHANGEOVER SWITCHES WITH MOTORIZED UNIT AND CONTROL MODULE



Amp.	3P+N ^{*(1)}
	Code
125	CTRFC01253NSBJ
200	CTRFC02003NSBJ
250	CTRCCC02503NSBJ
400	CTRCCC04003NSBK
630	CTRCCC06303NSBK
1000	CTRCCC10003NSBK
1250	CTRCCC12503NSBK
1600	CTRFC16003NSBK
2000	CTRFC20003NSBK

^{*(1)} Neutral pole early make-late break.

Fuse Switch-Disconnectors

Testing and approvals:    

Our two switch-disconnectors with fuses series –M3 & M21– offer both a high operating load capacity and a high level of insulation. M21 series consist of a sandwich-type body with external housings to insert

According to:

IEC 60947-3 | IEC 61439-2 | UL98 | RoHS

Different handles

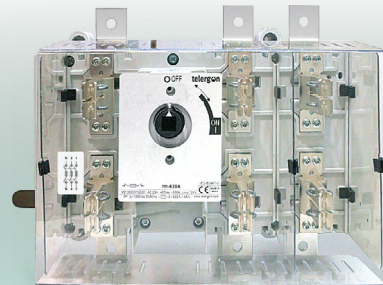
Depending on the installation mode (panel or direct)



fuses according to the appropriate format, while M3 series is a new fully modular range of switch-disconnectors with fuses, conceived to be the most compact products in the market.

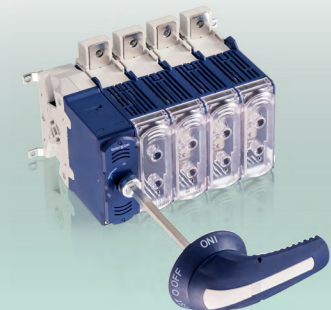
Extreme safety

The interlocked fuse protection covers cannot be opened while the switch is in "ON" position.



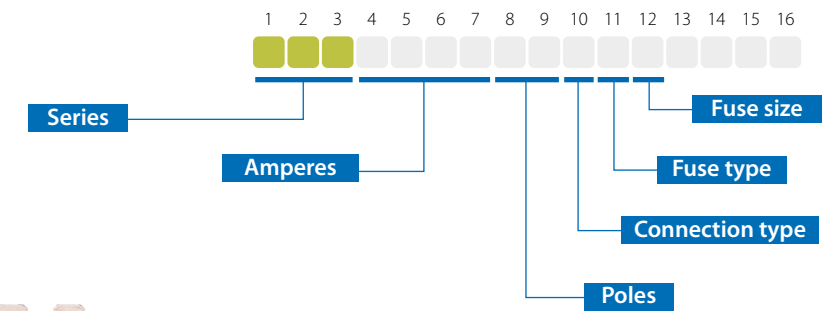
M3 series

Fully modular range with compact design



Possibility of incorporate

Different devices and accessories



M3 series

2P, 3P & 3P+N | 3P+DN.
Up to 250A.

Including the possibility of detachable neutral (3P+DN).
For different fuses standards.



M21 series

3P & 3P+N.
Available from 400A up to 800A.

Compact model.
Fuse links: NH/DIN and BS.



CIF22C & CIF23C series

Metal enclosed fuse switch 3P & 3P+N
Available from 63A up to 800A
Protection rating IP65.
Polyester available

External padlockable handle with locking door in ON 1 position.
Removing door blocked by padlock when handle is in OFF 0 position.

Fuse Switch-Disconnecter

M3 SERIES | 2P, 3P, 3P+N & 3P+DN | 32A-250A

Amp.	Fuse	Size	Connection	2P	3P	3P+N ^(*)	3P+DN (fixed detachable neutral)	Front operation						
								Direct handle		Standard		Emergency	External handle (shaft included)	
								Code	Code	Code	Code	Code	Code	Code
32	BS-A1-A2	00	00	M3-00322PBB10	M3-00323PBB10	M3-00323NBB10	M3-00323DBB10	DM3SIB1	177		DM3SAB2	DM3SAB1		
50	14x51			M3-00502PBC20	M3-00503PBC20	M3-00503NBC20	M3-00503DBC20							
63	BS-A2-A3			M3-00632PBB20	M3-00633PBB20	M3-00633NBB20	M3-00633DBB20							
	NH000			M3-01002PBD20	M3-00633PBD20	M3-00633NBD20	M3-00633DBD20							
80	BS-A3			M3-00802PBB30	M3-00803PBB30	M3-00803NBB30	M3-00803DBB30							
100	22x58			M3-01002PBC30	M3-01003PBC30	M3-01003NBC30	M3-01003DBC30							
	NH000			M3-01002PBD30	M3-01003PBD30	M3-01003NBD30	M3-01003DBD30							
100	BS-A3			M3-01002PTB30	M3-01003PTB30	M3-01003NTB30	M3-01003DTB30	DM3SIB1	177		DM3SAB2	DM3SAB1		
	BS-A3			M3-01252PTB30	M3-01253PTB30	M3-01253NTB30	M3-01253DTB30							
125	22x58			M3-01252PTC30	M3-01253PTC30	M3-01253NTC30	M3-01253DTC30							
	NH00	M3-01252PTD40	M3-01253PTD40	M3-01253NTD40	M3-01253DTD40									
160	NH00	M3-01602PTD40	M3-01603PTD40	M3-01603NTD40	M3-01603DTD40									
160	BS-A4	M3-01602PSB50	M3-01603PSB50	M3-01603NSB50	M3-01603DSB50	DM3SI11	227		DM3SA12	DM3SA11				
	200	BS-B1-B2	M3-02002PSB60	M3-02003PSB60	M3-02003NSB60						M3-02003DSB60			
200	BS-B1-B2	M3-02502PSD50	M3-02503PSD50	M3-02503NSD50	M3-02503DSD50									
	NH1	M3-02502PSB80	M3-02503PSB80	M3-02503NSB80	M3-02503DSB80									
250	BS-B3	M3-02502PSB80	M3-02503PSB80	M3-02503NSB80	M3-02503DSB80									

* For UL references, please consult.

M21 SERIES | 3P, 3P+N & 3P+FN | 400A-800A

Amp.	Fuse	Size	Connection	3P	3P+N ^(*)	3P+FN	Manual handle		
							Direct handle	External handle (shaft included)	
400	NH2	2	00	M2104003PSD20	M2104003NSD20	M2104003FSD20	DM2SI21		DS-LA22
400	BSB1...BSB4			M2104003PSB50	M2104003NSB50	M2104003FSB50			DS-LR22
630	NH3			M2106303PSD30	M2106303NSD30	M2106303FSD30	DM2SI31		DS-LA31
800	NH3			M2108003PSD30	M2108003NSD30	M2108003FSD30			DS-LR31
630	BSC1...BSC2	M2106303PSB70	M2106303NSB70	M2106303FSB70					
800	BSC1...BSC3	M2108003PSB80	M2108003NSB80	M2108003FSB80					

CIF SERIES | M3 METAL ENCLOSURE | IP65

Amp.	Fuse	Size	Connection	Series	3P	3P+N ^(*)	Box dimensions	Auxiliary contacts ^(*)	Cable entry	Fixing brackets	Terminal shrouds ^(*)	
											3p output	3P+N input or output
63	NH000	00	00	M3	CIF23C00633PBD2	CIF23C00633NBD2	300x300x200	DM3AUB1	125x215	20105079	-	-
100	NH000				CIF23C01003PBD3	CIF23C01003NBD3	300x300x200	DM3AUB1	125x215	20105079	-	-
125	NH00	0	00	M3	CIF23C01253PTD4	CIF23C01253NTD4	400x400x200	DM3AUB1	125x285	20105079	DM3CU02	DM3CU03
160	NH00				CIF23C01603PTD4	CIF23C01603NTD4	400x400x200	DM3AUB1	125x285	20105079	DM3CU02	DM3CU03
250	NH1				1	M3	CIF23C02503PSD5	CIF23C02503NSD5	600x400x250	D5LAU01	485x125	20105079


* For polyester and NFC references, please consult.

^(*) Neutral pole early make & late break. Also available 4P.

^(*) With the side handle code, the auxiliary contacts holder is included (DM3AMB1/DM3AM11), as it is required for installation.

^(*) To be used as signaling or control contacts. Ie = 0.1A at 125 VAC and 0.1A at 30 VDC (resistive loads) (M3) This code includes just an individual auxiliary contact (1 pc per package), so it is necessary to order as many pcs as it would be needed of any type of contact.

^(*) One set for input or output.



Size	Side operation				Auxiliary contacts ^(*)	Auxiliary contacts holder ^(*)		Shaft extensions	Phase barriers	Terminal shrouds ^(*)	Shaft guide	
	Direct handle ^(*)	External handle (shaft included)				Early make contacts	Simultaneous contacts					
		Code	L (mm)	ON-OFF / Code								ON-OFF-TEST / Code
00	DM3SSB1	177		DM3SBB2	DM3SBB1	DM3AUB1	DM3AMB1	DM3ASB1	250	DM3EP01	DS-EC00	
				387	DM3EP02							
0	DM3SSB1	177		DM3SBB2	DM3SBB1	DM3AUB1	DM3AMB1	DM3ASB1	250	2P DM3SF01 ^(*)		DM3CU01
				387	DM3EP02				3P DM3SF02 ^(*)	DM3CU02		
		3P+N DM3SF03 ^(*)	DM3CU03									
1	DM3SS11	227		DM3SB12	DM3SB11	DM3AUB1	DM3AM11	DM3AS11	375	2P DM3SF11		DM3CU11
				536	DM3EP12				3P DM3SF12	DM3CU12		
		3P+N DM3SF13	DM3CU13									

CIF SERIES | M21 METAL ENCLOSURE | IP65

Amp.	Fuse	Size	Connection	Series	3P	3P+N ^(*)	Box dimensions	Auxiliary contacts ^(*)	Cable entry	Fixing brackets	Terminal shrouds ^(*)	
											3p output	3P+N input or output
400	NH2	2	00	M21	CIF22C04003PSD2	CIF22C04003NSD2	800x600x260	D5LAU01	485x125	20105079	DM3CU22	DM2CU23
630	NH3	3	00	M21	CIF22C06303PSD3	CIF22C06303NSD3	1000x600x260	D5LAU01	485x125	20105079	DM3CU32	DM2CU33
800	NH3				CIF22C08003PSD3	CIF22C08003NSD3	1000x600x260	D5LAU01	485x125	20105079	DM3CU32	DM2CU33

^(*) To be used as signaling or control contacts - Ie = 16A (resistive loads) 4A (inductive loads) at 250 Vac. (M21)

^(*) In 22x58 and BS size the device includes directly the phase barriers.

^(*) With the switch 1NO+1NC early make contact (ON-OFF position) and 1NO+1NL early make contact (TEST position) can be fixed. Maximum capacity with holders: 3NO+3NC for OFF position (2 early make contacts and 1 simultaneous) / 2NO+2NC for TEST position (2 early make contacts)

^(*) Neutral pole early make & late break. Also available (M3) 4P & 3P+DN / (M21)- 4P & 3P+FN under request.

^(*) To be used as signaling or control contacts - Ie = 0.1A at 125 VAC and 0.1A at 30 VDC (resistive loads) (M3) / Ie = 16A (resistive loads) 4A (inductive loads) at 250 Vac (M21).

Whilst closing, it closes after the main contacts. Whilst opening, it opens before the main contacts.

^(*) One set for input or output.

DC switch-disconnectors

Testing and approvals:     



All the DC series offer accurate specifications for photovoltaic applications, as well as a high level of insulation and safety.

According to:

IEC 60947-1&3 | UL508i* | UL98B* | RoHS
* under request

All of them present an easy assembly, which allows a faster installation, while the dimensions and weight are in all cases fully optimized.

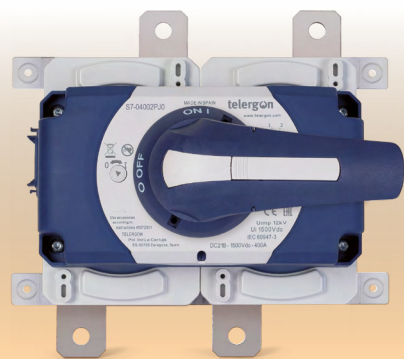
CRS Firefighter Safety Switch

The perfect solution to protect residential, industrial or commercial photovoltaic systems



S7 series

High performance switch-disconnector capable of reaching 500A - 1500 Vdc (750 Vdc per pole)

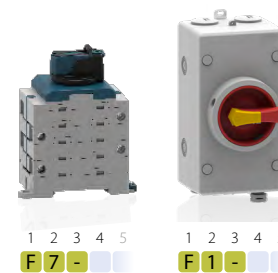
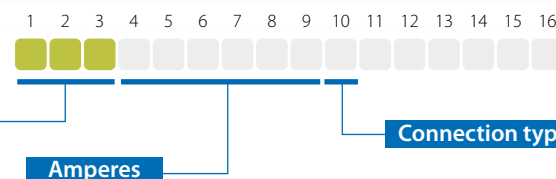
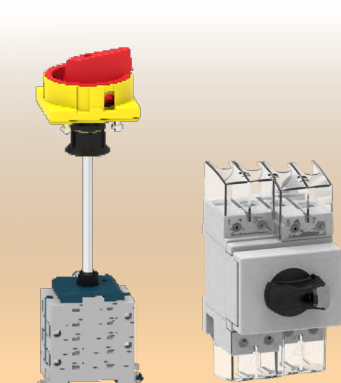


Diverse sizes & models



Compact series

Different mounting options



F7 series

1500 V
Modular design, available 2 up to 10 levels.
Dynamic sealing design and world class sealing materials for an IP66 protection.
13A-50A

F1 series

1200V
Lockable at OFF position
Different type of mounting
IP66 degree of protection
32A

1500V DC

1200V DC



CRS Firefighter Safety switch

Temperature sensor shut down reaching 70°C inside the enclosure
IP66

Suitable up to 5 circuits/strings
Maximum circuit current 55A

1500V DC



S6 DC series

$U_{e\text{ MAX}}$ 1000 Vdc $I_{e\text{ MAX}}$ 630 A DC 21B.
1P & 2P.

Different configurations input/output.
Non polarized.

1000V DC

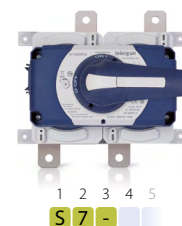


S5 & S5N DC series

$U_{e\text{ MAX}}$ 1000 Vdc $I_{e\text{ MAX}}$ 3150 A DC 21B.
4P.
Non polarized.

S5N: Back to back arrangement with operating mechanism in front (4P +4P).
From 2000A up to 3150A.

1000V DC



S7 DC series

$U_{e\text{ MAX}}$ 1500 Vdc $I_{e\text{ MAX}}$ 500 A DC 21B pure 2P.
Maximized electrical performance.

Easy to install and maintain.

1500V DC



S5M series

$U_{e\text{ MAX}}$ 1500 Vdc $I_{e\text{ MAX}}$ 1800A DC 21B.
4P+4P.

Back to back with operating mechanism in side.

1500V DC



DC switch-disconnectors **NEW**



Type	2P	4P	4B	4T	4S
Contacts Wiring graph					

► **F1 SERIES | DIN-RAIL MOUNTING (DB)**



Amp	Poles	Code	lockable	DF1CUA1
32	2P	F1-00322P1DB		
32	4P	F1-00324P1DB		
32	4B	F1-00324B1DB		
32	4T	F1-00324T1DB		
32	4S	F1-00324S1DB		

► **F1 SERIES | PANEL MOUNTING (PM)**



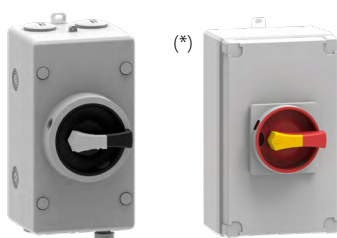
Amp	Poles	Code	lockable (red/yellow)	lockable (black)	without lock (black)	Code
32	2P	F1-00322P4PM				DF1CUA1
32	4P	F1-00324P4PM				
32	4B	F1-00324B4PM				
32	4T	F1-00324T4PM				
32	4S	F1-00324S4PM				

► **F1 SERIES | DOOR INTERLOCK (DC)**



Amp	Poles	Code	lockable (red/yellow)	lockable (black)	without lock (black)	Code
32	2P	F1-00322P4DC				DF1CUA1
32	4P	F1-00324P4DC				
32	4B	F1-00324B4DC				
32	4T	F1-00324T4DC				
32	4S	F1-00324S4DC				

► **F1 SERIES | ENCLOSED SOLUTIONS**



Amp	Poles	Code	Polyester	Aluminium
32	2P	F1-00322P3EP		F1-00322P3EA
32	4P	F1-00324P3EP		F1-00324P3EA
32	4B	F1-00324B3EP		F1-00324B3EA
32	4T	F1-00324T3EP		F1-00324T3EA
32	4S	F1-00324S3EP		F1-00324S3EA

(*) For emergency handle, please consult.

► **CRS Firefighter Safety Switch**



- Suitable up to 5 strings / circuits
- Maximum circuit current 55A
- Maximum cricuit voltage 1500vdc
- Protection degree IP66
- *1 **Poles:** 2P (02P), 4P (04P), 6P (06P), 8P (08P), 10P (10P)
- Isolation switch is TUV, CE, CB, SAA certificated
- Waterproof vent valve to avoid condensation inside the enclosure
- Built in temperature sensor that allows automatic shut down of the system when reaching 70°C inside the enclosure

NEW



Up to 5 strings

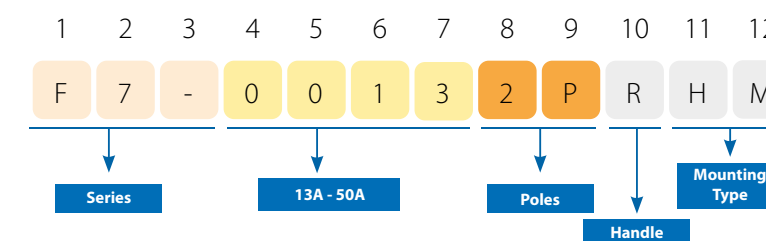


According to IEC60947-3 (ed.3.2):2015, UL508i. Utilization category DC-PV1

800V	1000V	1500V	Poles	Strings	Code
55A	50A	30A	2	1	CRS005002P0
55A	50A	30A	4	2	CRS005004P0
55A	50A	30A	6	3	CRS005006P0
55A	50A	30A	8	4	CRS005008P0
55A	50A	30A	10	5	CRS005010P0

► **F7 SERIES | SWITCHES | 13A-50A**

NEW



- Modular design, available 2 up to 10 levels.
- Dynamic sealing design and world class sealing materials for an IP66 protection.
- From 13 A up to 50 A
- **Handle:** Lockable (R) or without out lock (0)
- **Mounting Type:** Single Hole Mounting (HM), Panel Mounting (PM), Distribution Board (DB), Door Clutch (DC).



DC switch-disconnectors

S6 DC SERIES | SWITCHES | 1P & 2P | 125A-630A

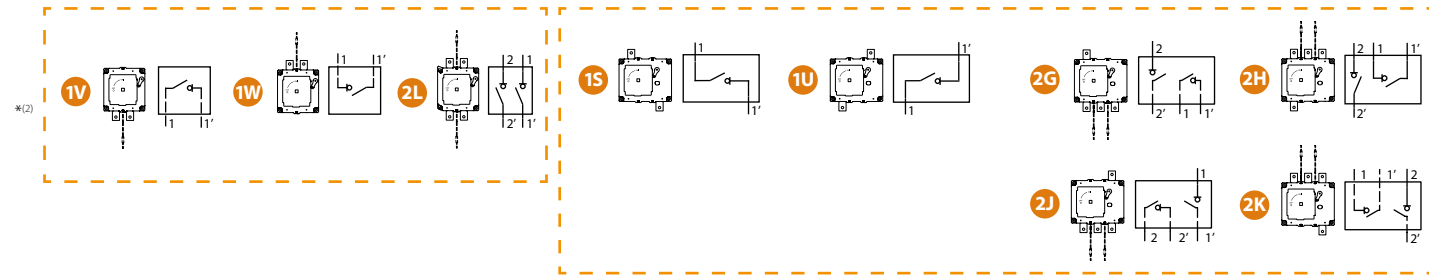


1P 2P *(2)	Rated operational voltage Ue	Rated operational current Ie (A)	Size	Connection	Diagram *(2)	Manual handle			
						External*(1)	Direct		
						Code	Code		
500V - 750V - 1000V DC21B	125 160 200 250 315 400	1	1			DS-SA11	DS-SI11		
								Code	
								S6-0125_S0	
								S6-0160_S0	
								S6-0200_S0	
								S6-0250_S0	
								S6-0315_S0	
500V - 750V - 1000V DC21B	250 400 630	2	2			DS-LA21	DS-LI21		
								Code	
								S6-0500_S0	
500V - 750V - 1000V DC21B	250 400	1	1			DS-SA11	-		
								Code	
S6-0250_S00L*									
S6-0400_S00L*									

*References only UL.

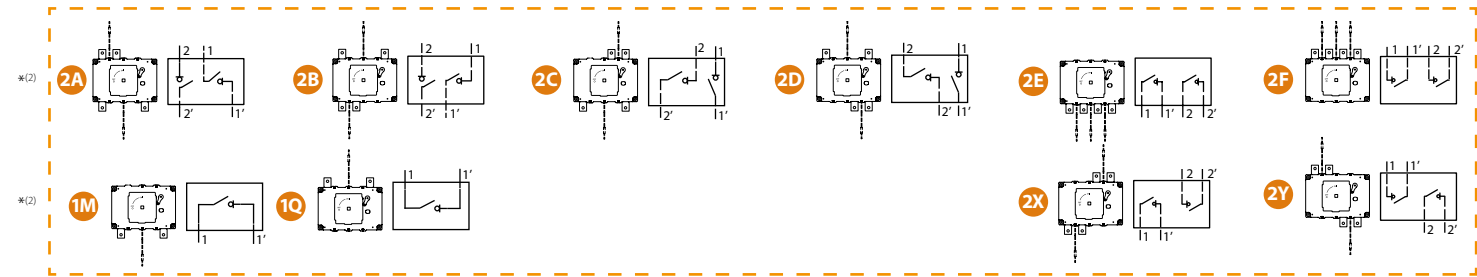
500Vdc

750Vdc

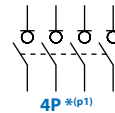


Size	Shaft extensions *(3)	Shaft guide	Auxiliary contacts *(5)		Safety key lock device *(6)		Spacers (4 units)	Terminal lug (2 units)	Terminal shrouds (1 unit) *(4)			Phase barriers				
			Type 1 & 2		1NO+1NC	2NO+2NC			Simple	Double	Code	Code	Code	1 unit	2 units	3 units
			L	Code *(e1)												
1	10	375 536	DS-EP14 DS-EP15	DS-EC00	D5LAU01	D5LAU02	DS-CA11	DS-CE11	DR-EL11	-	DR-CU11	DR-CU12	DR-CU13	DR-SF11	DR-SF12	DR-SF13
2	14	345 535	DS-EP23 DS-EP24	DS-EC00	D5LAU01	D5LAU02	DS-CB21	DS-CF21	DR-EL21	-	DR-CU21	DR-CU22	DR-CU23	DR-SF21	DR-SF22	DR-SF23
1	10	375 536	DS-EP14 DS-EP15	DS-EC00	D5LAU01	D5LAU02	-	-	DR-EL11	DR-TL11	DR-CU11	DR-CU12	DR-CU13	DR-SF11	DR-SF12	DR-SF13
2	14	345 535	DS-EP23 DS-EP24	DS-EC00	D5LAU01	D5LAU02	-	-	DR-EL21	DR-TL22	DR-CU21	DR-CU22	DR-CU23	DR-SF21	DR-SF22	DR-SF23

1000Vdc



S5 & S5N SERIES | SWITCHES | 4P | 850A-3150A



4P *(p1)	Rated operational voltage Ue	Rated operational current Ie (A)	Size	Connection	4 pole (4P) *(p1)	Manual handle			
						External*(1)	Direct		
						Code	Code		
1000V DC21B	850 1250 1250 1800 2000	3	3			DS-LA31	DS-LI31		
								Code	
								S5-12504PC0	
								S5-12502EC0	
								S5-18004PS0	
5 (S5N)	2000 2500 3150	5	5 (S5N)			DS-LA41	DS-LI41		
								Code	
								S5N20002ES0	
S5N25002ES0									
S5N31502ES0									



Size	Shaft extensions *(3)	Bridging links *(p1)		Auxiliary contacts *(5)		Terminal protection		Terminal shrouds (2 units) *(4)			
		Type 1 & 2		1NO+1NC Code	2NO+2NC Code	Connection	Code	Code			
		L	Code *(e1)						Code		
3	14	345 535	DS-EP23 DS-EP24		DS-PI31 DS-PI3D	D5LAU01	D5LAU02	-			
									Code		
									DS-PI41 (S5-18004PS0)		
4	14	485 635	DS-EP44 DS-EP45		DS-PI4D (S5-18002ES0-S5-20002ED0)	D5LAU01	D5LAU02	-			
									Code		
									DS-PI4D + D5LPC45		
5 (S5N)	-	-	-		DS-PI51 + D5LPC45	D5LAU01	D5LAU02	-			
									Code		
									DS-PI4D + D5LPC45 (x2)		



DC switch-disconnectors

► S7 DC SERIES | HIGH-PERFORMANCE SWITCHES | 2P | 160A-500A



Rated operational voltage Ue	Rated operational current Ie (A)	Size	Connection	2P	
				Code	
1500 V DC 21B	160	1		S7-01602PS0	
	200			S7-02002PS0	
	250			S7-02502PS0	
	315			S7-03152PS0	
	400			S7-04002PS0	
1500 V DC UL98B	500			S7-05002PS0	
	250			S7-02502PS00L*	
	320			S7-03202PS00L*	
	400			S7-04002PS00L*	
	500			S7-05002PS00L*	

* References only UL.
 *(2) For side operation, please consult.



► S5M & S5N SERIES | SWITCHES | 4P+4P | 630A-1800A

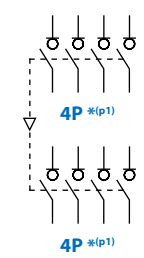


S5M DC



S5N DC

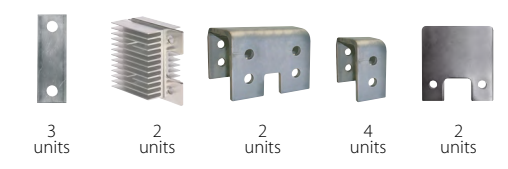
Rated operational voltage Ue	Rated operational current Ie (A)	Size	Connection	4P + 4P *(p1)	Manual handle	
					External *(1)	Direct
					Code	Code
1500V DC 21B	630	2		S5M080044C0	DS-LA22	DS-LI22
	800	3		S5M080044R0	DS-LA41	DS-LI41
	1000			S5M125044C0	DS-LA41	DS-LI41
	1250	4		S5N160044S0	DS-LA41	DS-LI41
	1800	(S5N)		S5N180044S0	DS-LA41	DS-LI41



*(1) Padlockable handle in OFF 0 position. Possibility of unlocking the door in ON I position (with the use of a tool). Door interlocked by a padlock in OFF 0 position.
 *(p1) In order to comply with the operation and electrical features, the bridging links must be assembled to the switch.
For references S6N | 2P, S6R | 1P & 2P, please consult Commercial Department.
 *(2) To be used as signaling or control contacts – Ie = 16A (resistive loads) 4A (inductive loads) at 250 Vac. Whilst closing, it closes after the main contacts. Whilst opening, it opens before the main contacts.
 *(3) Padlockable handle in OFF 0 position. Possibility of unlocking the door in ON I position (with the use of a tool). Door interlocked by a padlock in OFF 0 position.
 *(4) A standard shaft is included with the external handle.
 *(61) All these codes are related to the new handle , in case of replacements for old design handles, please consult.
 *(62) Only IEC.



Size	Manual handle		Auxiliary contacts *(5)		Captive Nut	Spacer Fixing Brackets
	External*(1)	Direct	1NO+1NC	2NO+2NC	Code *(62)	2 units
	Code	Code	Code	Code		Code
1	DS-SA11	DS-SI11	DM-AU11	DM-AU12	-	DM-EL11
					DM-PT11	
					DM-PT12	
					-	
					-	

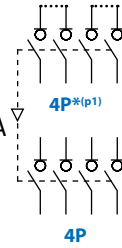






Size	Bridging links *(p1)		Auxiliary contacts *(2)			
	Code		1NO+1NC	2NO+2NC		
					Code	Code
2		DS-PI230L	DS-AU11	DS-AU12		
		DS-PI2D				
3		DS-PI3D	DS-AU11	DS-AU12		
4 (S5N)		DS-PI430U	D5LAU01	D5LAU02		
		DS-PI4D				

Changeover AC | DC & DC | DC

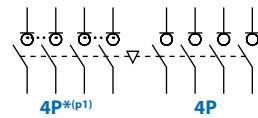
Testing and approvals:    




► S5F AC/DC SERIES | CHANGEOVER SWITCHES BASE MOUNTING | 4P + 4P | 160A-630A



4P + 4P	Rated operational voltage		Size	Connection	4P + 4P ^{*(p1)}	Manual handle 		UM-C Motorized unit kit (I - O - II)
	DC	AC				External ^{*(1)}	Direct	
	DC21B	Amp						
	50 A/800V	160	0		S5F01604PS0PA4	D5LLA01	D5LSI01	UM-C0A230Z
	160 A/1000V	200	1		S5F02004PR0PA4	D5LLA11	D5LLI12	UM-C15230Z
	250 A/1000V	315			S5F03154PR0PA4	D5LLA11	D5LLI12	UM-C15230Z
	400 A/1000V	400			S5F04004PC0PA4	D5LLA11	D5LLI12	UM-C15230Z
	630 A/1000V	500	2		S5F06304PR0PA4	D5LLA21	D5LLI22	UM-C25230M

► S5L AC/DC SERIES | CHANGEOVER SWITCHES BASE MOUNTING | 4P + 4P | 160A-315A



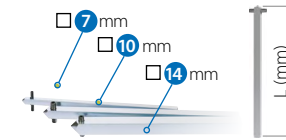
4P + 4P	Rated operational voltage		Size	Connection	4P + 4P ^{*(p1)}	Manual handle 	
	DC	AC				External ^{*(1)}	Direct
	DC21B	Amp					
	50 A/800V	160	0		S5L01604PB0PA4	D5LLA01	D5LSI01
	160 A/1000V	200	1		S5L02004PR0PA4	D5LLA11	D5LLI12
	250 A/1000V	315			S5L03154PR0PA4	D5LLA11	D5LLI12




► DC|DC CHANGEOVER SWITCHES

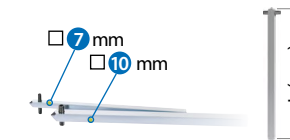
- DC|DC** - 1000Vdc | S5F 160A up to 630A.
- DC|DC** - 1000Vdc | S5L 160A up to 250A.
- DC|DC** - 1500Vdc | 250A up to 315A.
- DC|DC** - 4P+4P.
- DC|DC** - For customization and other amperages, please consult.





According to:
IEC 60947-3 | RoHS



Size	□	Shaft extensions ^{*(2)}		Auxiliary contacts ^{*(3)}		Bridging links ^{*(p1)}	
		L	Code ^{*(e1)}	1NO+1NC	2NO+2NC	Connection	2 units
0	7	250	DS-EP04	DS-AU11	DS-AU12		DS-PI01
1	10	375	DS-EP14	DS-AU11	DS-AU12		DS-PI11
2	14	345	DS-EP23	DS-AU11	DS-AU12		DS-PI21




Size	□	Shaft extensions ^{*(2)}		Auxiliary contacts ^{*(3)}		Bridging links ^{*(p1)}	
		L	Code ^{*(e1)}	1NO+1NC	2NO+2NC	Connection	2 units
0	7	250	DS-EP04	D5LAU01	D5LAU02		DS-PI05
1	10	375	DS-EP14	D5LAU01	D5LAU02		DS-PI11

^{*(1)} Padlockable handle in OFF position. Possibility of unlocking the door in ON position (with the use of a tool). Door interlock by a padlock in OFF 0 position.

^{*(2)} Other configurations are available. Please, consult.

^{*(3)} For use as signaling and control contacts. In closing operation, they switch after the main contacts. In opening operation, they switch before the main contacts. I_e = 16 (4) A (250 V).

^{*(p1)} In order to comply with the operation and electrical features, the bridging links must be assembled to the switch.

 Please indicate in your order the switch code and the handle code, as these both products are managed separately.

DC ISOLATION ONLY

Testing and approvals:   

► S5 DC & S6 DC SERIES | DISCONNECTORS | 1P | 160A-2000A

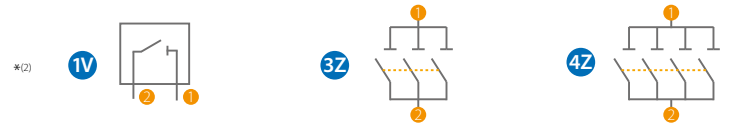


S5 DC ISOLATION ONLY



S6 DC ISOLATION ONLY

1P *(p1)	Rated operational voltage Ue	Rated operational current le (A)	Size	Connection	Unipolar (1P) *(p1)		Manual handle ISOLATION ONLY	
					Code	Diagram	External*(1)	Direct
1500V DC20A	160	1	1		S6-01601VS0P38	1V	DS-SA11T	DS-SI11T
					S6-02001VS0P38	1V		
					S6-02501VS0P38	1V		
					S6-04001VD0P38	1V		
	400	1	1		S5-04003ZC0P38	3Z	DS-SA11T	DS-SI11T
					S5-04004ZC0P38	4Z		
	800	1	1		S6-06301VS0P38	1V	DS-LA21T	DS-LI21T
					S5-08004ZC0P38	4Z		
	1000	2	2		S6-06301VS0P38	1V	DS-LA21T	DS-LI21T
					S5-08004ZC0P38	4Z		
1600	3	3		S5-12504ZC0P38	4Z	DS-LA31T	DS-LI31T	
				S5-12504ZC0P38	4Z			
2500	3	3		S5-12504ZC0P38	4Z	DS-LA31T	DS-LI31T	
				S5-12504ZC0P38	4Z			



► S5 DC & S6 DC SERIES | DISCONNECTORS | 2P | 160A-3150A



S5 DC ISOLATION ONLY

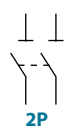
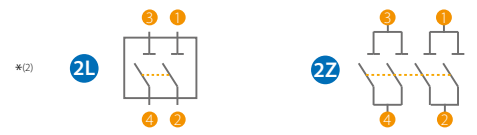


S6 DC ISOLATION ONLY



S6 DC 2P ISOLATION ONLY

2P *(p1)	Rated operational voltage Ue	Rated operational current le (A)	Size	Connection	Bipolar (2P) *(p1)		Manual handle ISOLATION ONLY	
					Code	Diagram	External*(1)	Direct
1500V DC20A	160	1	1		S6-01602LS0P38	2L	DS-SA11T	DS-SI11T
					S6-02002LS0P38	2L		
					S6-02502LS0P38	2L		
					S6-04002LD0P38	2L		
	400	1	1		S6-06302LS0P38	2L	DS-LA21T	DS-LI21T
					S6-08002LD0P38	2L		
	630	2	2		S5-12504ZC0P38	2Z	DS-LA31T	DS-LI31T
					S5-12504ZC0P38	2Z		
	800	2	2		S6-16002PS0P38	2P	DS-LA41T	DS-LI41T
					S6-16004PS0P38	4P		
2200	3	3		S5-16004ZS0P38	2Z	DS-LA41T	DS-LI41T	
				S5-16004ZS0P38	2Z			
1600	4	4		S5-18004ZS0P38	2Z	DS-LA41T	DS-LI41T	
				S5-18004ZS0P38	2Z			
2500	4	4		S5-18004ZS0P38	2Z	DS-LA41T	DS-LI41T	
				S5-18004ZS0P38	2Z			
3150	4	4		S5-18004ZS0P38	2Z	DS-LA41T	DS-LI41T	
				S5-18004ZS0P38	2Z			



*(1) Padlockable handle in OFF 0 position. Possibility of unlocking the door in ON 1 position (with the use of a tool). Door interlock by a padlock in OFF 0 position.

*(2) Other configurations are available. Please, consult.

*(p1) In order to comply with the operation and electrical features, the bridging links must be assembled to the switch.

⚠ Please indicate in your order the switch code and the handle code, as these both products are managed separately.



According to:
IEC 60947-1&3 | UL98 | RoHS



Size	□	Shaft extensions *(3)		Bridging links *(p1)	Auxiliary contacts *(4)		Phase barriers		Spacers (4 units)	Terminal protection *(5)	Terminal shrouds *(5)
		L	Code		1NO+1NC	2NO+2NC	1 unit	2 units			
				Code	Code	Code	Code	Code	Code		
1	10	375	DS-EP14	-	D5LAU01	D5LAU02	DR-SF11	DR-SF12	DR-EL11	-	DR-CU11
		536	DS-EP15								
1	10	375	DS-EP14	DS-PI1G DS-PI1H	D5LAU01	D5LAU02	-	-	-	DS-CU12	-
		536	DS-EP15								
2	14	345	DS-EP23	-	D5LAU01	D5LAU02	DR-SF21	DR-SF22	DR-EL21	-	DR-CU21
		535	DS-EP24								
3	14	345	DS-EP23	DS-PI3H	D5LAU01	D5LAU02	-	-	-	-	-
		535	DS-EP24								



Size	□	Shaft extensions *(3)		Bridging links *(p1)	Auxiliary contacts *(4)		Phase barriers		Spacers (4 units)	Terminal shrouds *(5)
		L	Code		1NO+1NC	2NO+2NC	1 unit	2 units		
				Code	Code	Code	Code	Code	Code	
1	10	375	DS-EP14	-	D5LAU01	D5LAU02	DR-SF11	DR-SF12	DR-EL11	DR-CU11
		536	DS-EP15							
2	14	345	DS-EP23	-	D5LAU01	D5LAU02	DR-SF21	DR-SF22	DR-EL21	DR-CU21
		535	DS-EP24							
3	14	345	DS-EP23	DS-PI3L x 2	D5LAU01	D5LAU02	-	-	-	-
		535	DS-EP24							
4	14	485	DS-EP44	DS-PI4K x 2	D5LAU01	-	-	-	-	DR-CU42 2 units
		635	DS-EP45							
		485	DS-EP44							
		635	DS-EP45							

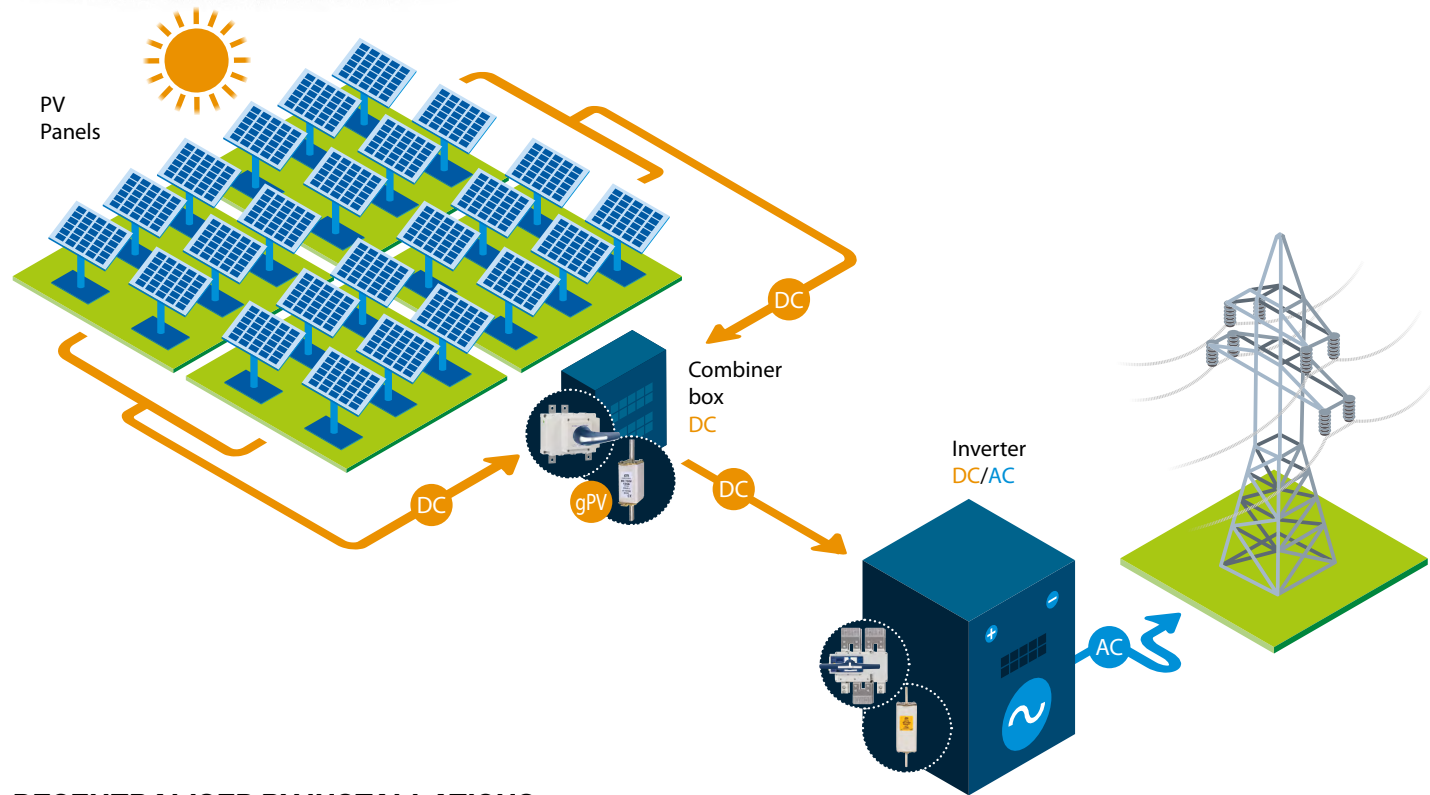
*(3) A standard shaft is included with the external handle.

*(4) To be used as signaling or control contacts - le = 16A (resistive loads) 4A (inductive loads) at 250 Vac. Whilst closing, it closes after the main contacts. Whilst opening, it opens before the main contacts.

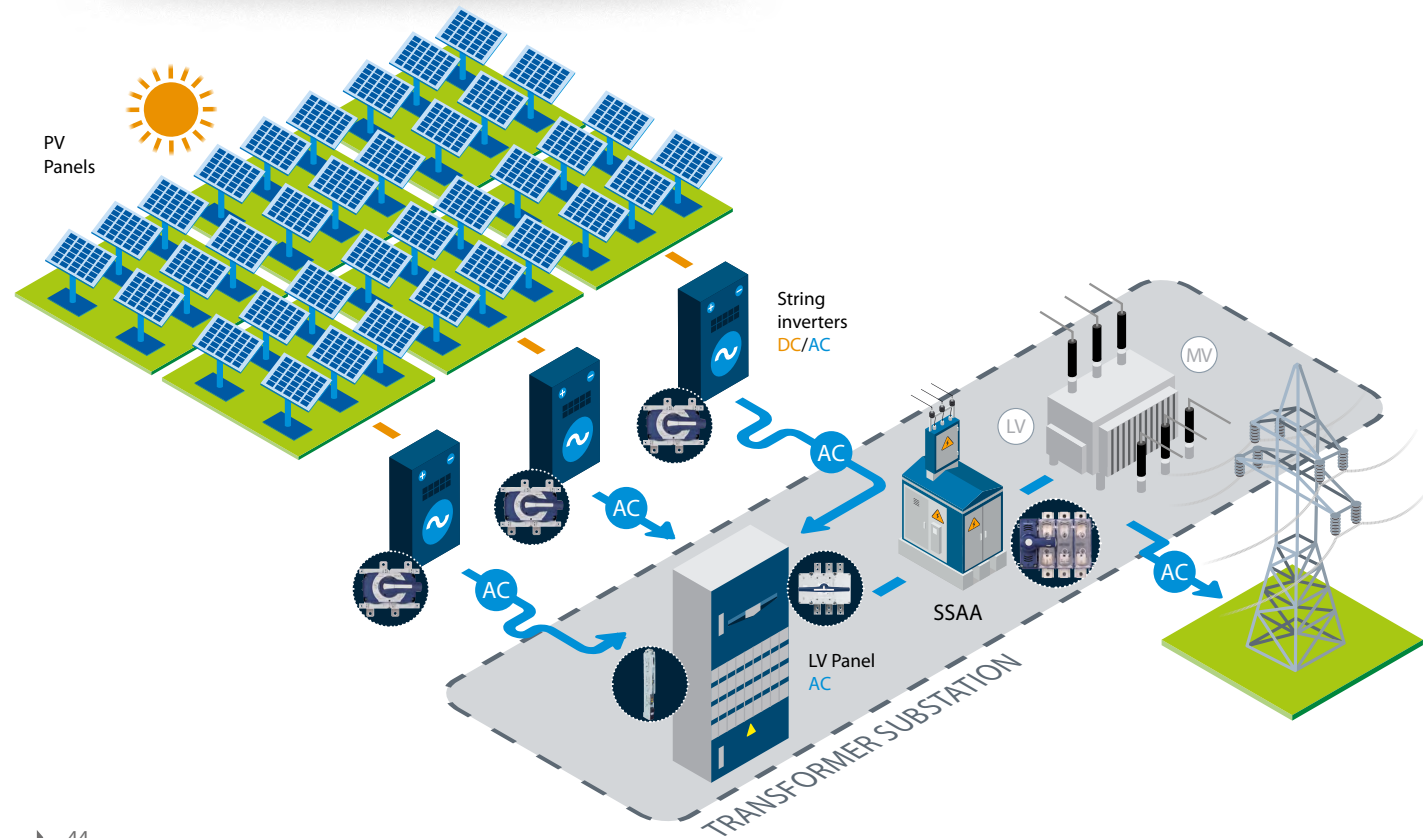
*(5) One unit for input or output.

Green energy applications

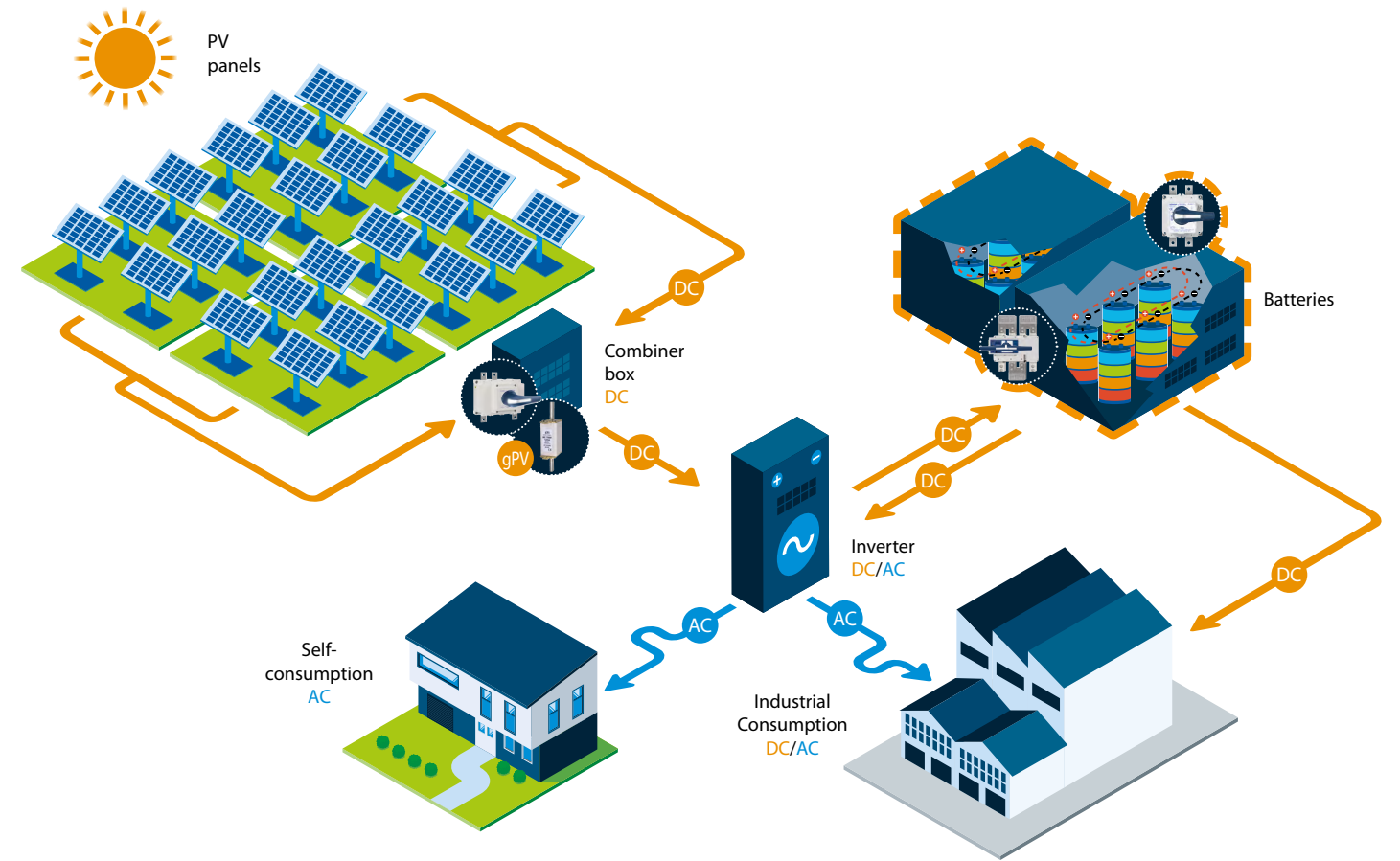
▶ CENTRALISED PV INSTALLATIONS



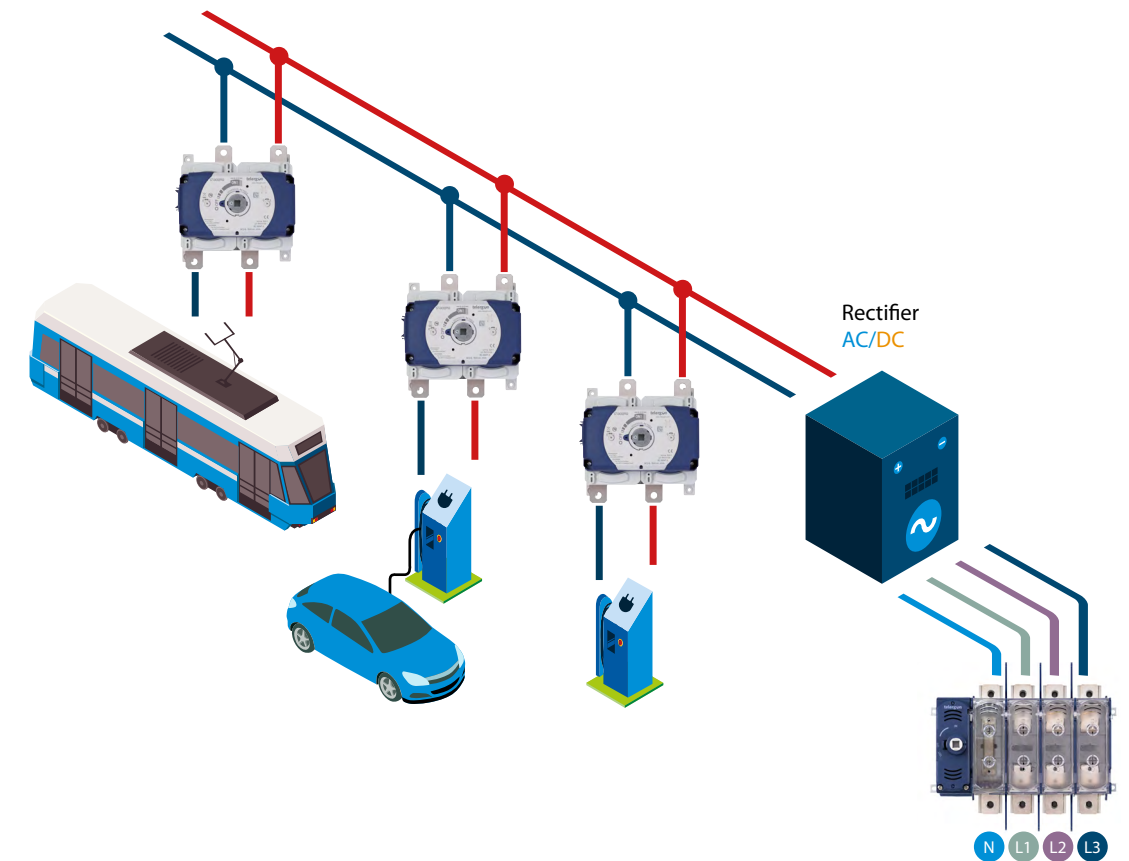
▶ DECENTRALISED PV INSTALLATIONS



▶ BATTERY ENERGY STORAGE SYSTEMS



▶ E-MOBILITY FAST CHARGING STATIONS





Telergon, S.A.U.
Ctra. Castellón (Pol. La Cartuja)
50720 La Cartuja Baja
Zaragoza / España



Tel. +34 976 500 876
info@telergon.com
www.telergon.com

TDM-GUIDE-ING-032024