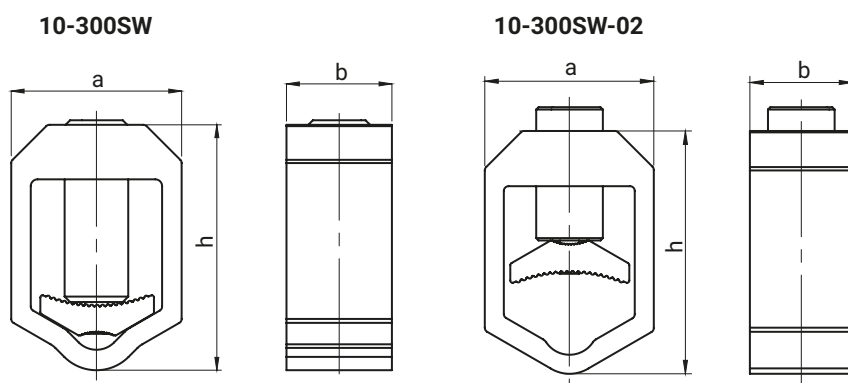


# Screw clamps v-klema type

## Single aluminium



NEW

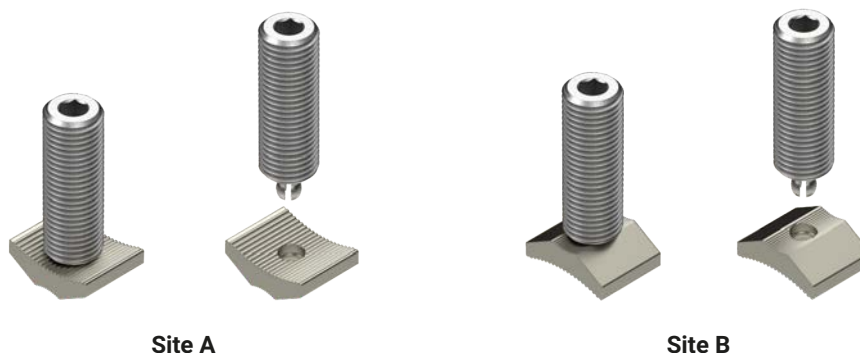


10-300SW



10-300SW-02

Possibility of changing the way the clamp is mounted



Site A

Site B

- sm** - multiwire sector shaped conductor (flexible)
- rm** - round multiwire conductor (flexible)
- se** - sector shaped conductor (rigid)
- re** - round conductor (rigid)

DETAIL	Site	CROSS-SECTION [mm <sup>2</sup> ]				NOMINAL CROSS-SECTION [mm <sup>2</sup> ]	MAX TIGHTENING TORQUE [Nm]	DIMENSIONS		
		sm	se	rm	re			a	b	h
10-300SW	A	25-120	25-120	10-95	10-95	150	15	37,5	23	54
	B	150-300	150-300	120-300	120-300	150	25	37,5	23	54

DETAIL	Site	CROSS-SECTION [mm <sup>2</sup> ]				NOMINAL CROSS-SECTION [mm <sup>2</sup> ]	MAX TIGHTENING TORQUE [Nm]	DIMENSIONS		
		sm	se	rm	re			a	b	h
10-300SW-02	A	25-120	25-120	10-95	10-95	150	15	35,5	21,5	51
	B	150-300	150-300	120-300	120-300	150	25	35,5	21,5	51

	10-300SW
<b>clamp</b>	Brass- zinc plated
<b>housing</b>	Aluminium (AlMgSi)
<b>screw</b>	Steel zinc-plated

SW - hexagon head socked

\* Screw clamps conform to EN 60947-7-1 (IEC 60947-7-1)

\* Screw clamp 10-300SW - current value  $I_{th} = 309$  A